

Anti-NR2F1 antibody (60-180) (STJ11103861)

GENERAL INFORMATION

Product Type	Primary antibodies
Applications	IHC-P/ELISA
Host / Source	Rabbit
Reactivity	Human

PRODUCT PROPERTIES

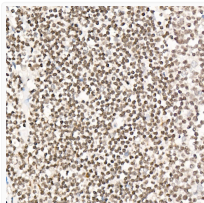
Clonality	Polyclonal
Concentration	Lot specific
Conjugation	Unconjugated
Purification	Affinity purification
Dilution Range	IHC-P:1:50-1:200 ELISA:Recommended starting concentration is 1 µg/mL. Please optimize the concentration based on your specific assay requirements.
Formulation	PBS with 0.05% Proclin300, 50% Glycerol, pH 7.3.
Isotype	IgG
Molecular Weight	Protein Mw: 46kDa Observed Mw: Refer to figures
Storage Instruction	Store at -20°C for up to 1 year from the date of receipt, and avoid repeat freeze-thaw cycles.

TARGET INFORMATION

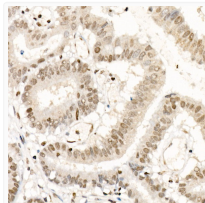
Gene ID	7025
Gene Symbol	NR2F1
UniProt ID	COT1_HUMAN
Immunogen Region	60-180
Immunogen Sequence	APATPGTAGDKGQGPPGSGQ SQQHIECVVCGDKSSGKHYG QFTCEGCKSFFKRSVRRNLT YTCRANRNCPIDQHHRNQCC YCRLKKCLKVGMRRREAVQRG RMPPTQPNPGQYALTNGDPL N
Specificity	A synthetic peptide corresponding to a sequence within amino acids 60-180 of human NR2F1 (NP_005645.1).

ADDITIONAL INFORMATION

Note **STRICTLY FOR FURTHER SCIENTIFIC RESEARCH USE ONLY (RUO). MUST NOT TO BE USED IN DIAGNOSTIC OR THERAPEUTIC APPLICATIONS.**



Immunohistochemistry analysis of NR2F1 in paraffin-embedded human tonsil tissue using NR2F1 Rabbit polyclonal antibody (STJ11103861) at a dilution of 1:200 (40x lens). High pressure antigen retrieval was performed with 0.01 M citrate buffer (pH 6.0) prior to immunohistochemistry staining.



Immunohistochemistry analysis of NR2F1 in paraffin-embedded human colon carcinoma tissue using NR2F1 Rabbit polyclonal antibody (STJ11103861) at a dilution of 1:200 (40x lens). High pressure antigen retrieval was performed with 0.01 M citrate buffer (pH 6.0) prior to immunohistochemistry staining.