

Anti-ETS1 antibody (1-260) (STJ11103852)

GENERAL INFORMATION

Product Type	Primary antibodies
Applications	WB/IHC-P/IF/ICC/ELISA
Host / Source	Rabbit
Reactivity	Human/Mouse

PRODUCT PROPERTIES

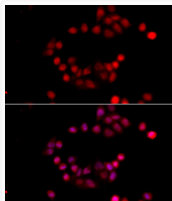
Clonality	Polyclonal
Concentration	Lot specific
Conjugation	Unconjugated
Purification	Affinity purification
Dilution Range	WB:1:500-1:1000 IHC-P:1:50-1:200 IF/ICC:1:100-1:500 ELISA:Recommended starting concentration is 1 Mu g/mL. Please optimize the concentration based on your specific assay requirements.
Formulation	PBS with 0.05% Proclin300, 50% Glycerol, pH 7.3.
Isotype	IgG
Molecular Weight	Protein Mw: 50kDa Observed Mw: 52kDa
Storage Instruction	Store at -20°C for up to 1 year from the date of receipt, and avoid repeat freeze-thaw cycles.

TARGET INFORMATION

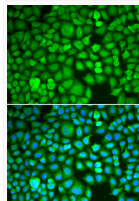
Gene ID	2113
Gene Symbol	ETS1
UniProt ID	ETS1_HUMAN
Immunogen Region	1-260
Immunogen Sequence	MKAAVDLKPTLTIKTEKVD LELFSPDMECADVPLLTPS SKEMMSQALKATFSGFTKEQ QRLGIPKDPQWTEETHVRDW VMWAVNEFSLKGVDFQKFCM NGAALCALGKDCFLELAPDF VGDILWEHLEILQKEDVKPY QVNGVNPAYPESRYTSDYFI SYGIEHAQCVPPEFSEPSF ITESYQTLHPISSEELLSLK YENDYPSVILRDLPLQTDTLQ NDYFAIKQEVVTPDNMCMG
Specificity	Recombinant fusion protein containing a sequence corresponding to amino acids 1-260 of human ETS1 (NP_005229.1).

ADDITIONAL INFORMATION

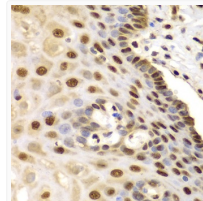
Note **STRICTLY FOR FURTHER SCIENTIFIC RESEARCH USE ONLY (RUO). MUST NOT TO BE USED IN DIAGNOSTIC OR THERAPEUTIC APPLICATIONS.**



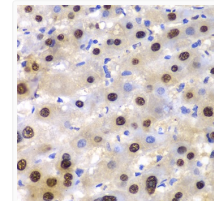
Immunofluorescence analysis of HeLa cells using ETS1 Rabbit polyclonal antibody (STJ11103852) at dilution of 1:100 (40x lens). Secondary antibody: Cy3 Goat Anti-Rabbit IgG (H+L) at 1:500 dilution. Blue: DAPI for nuclear staining.



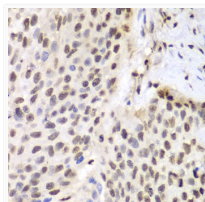
Immunofluorescence analysis of A549 cells using ETS1 Rabbit polyclonal antibody (STJ11103852). Secondary antibody: Cy3 Goat Anti-Rabbit IgG (H+L) at 1:500 dilution. Blue: DAPI for nuclear staining.



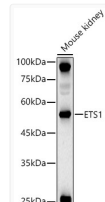
Immunohistochemistry analysis of ETS1 in paraffin-embedded human esophagus using ETS1 Rabbit polyclonal antibody (STJ11103852) at dilution of 1:100 (40x lens). Perform microwave antigen retrieval with 10 mM PBS buffer pH 7. 2 before commencing with immunohistochemistry staining protocol.



Immunohistochemistry analysis of ETS1 in paraffin-embedded human liver damage using ETS1 Rabbit polyclonal antibody (STJ11103852) at dilution of 1:100 (40x lens). Perform microwave antigen retrieval with 10 mM PBS buffer pH 7. 2 before commencing with immunohistochemistry staining protocol.



Immunohistochemistry analysis of ETS1 in paraffin-embedded human lung cancer using ETS1 Rabbit polyclonal antibody (STJ11103852) at dilution of 1:100 (40x lens). Perform microwave antigen retrieval with 10 mM PBS buffer pH 7. 2 before commencing with immunohistochemistry staining protocol.



Western blot analysis of lysates from Mouse kidney, using ETS1 Rabbit polyclonal antibody (STJ11103852) at 1:1000 dilution. Secondary antibody: HRP Goat Anti-Rabbit IgG (H+L) (STJS000856) at 1:10000 dilution. Lysates/proteins: 25 Mu g per lane. Blocking buffer: 3% nonfat dry milk in TBST. Detection: ECL Basic Kit. Exposure time: 60s.