

Anti-S100A1 antibody (1-94) (STJ11103849)

GENERAL INFORMATION

| | |
|---------------|--------------------|
| Product Type | Primary antibodies |
| Applications | WB/IHC-P/ELISA |
| Host / Source | Rabbit |
| Reactivity | Human/Mouse/Rat |

PRODUCT PROPERTIES

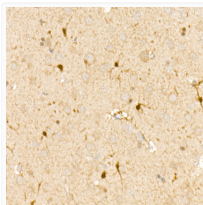
| | |
|---------------------|---|
| Clonality | Polyclonal |
| Concentration | Lot specific |
| Conjugation | Unconjugated |
| Purification | Affinity purification |
| Dilution Range | IF/ICC:1:100-1:500 ELISA:Recommended starting concentration is 1 Mu g/mL. Please optimize the concentration based on your specific assay requirements. |
| Formulation | PBS with 0.05% Proclin300, 50% Glycerol, pH 7.3. |
| Isotype | IgG |
| Molecular Weight | Protein Mw: 11kDa Observed Mw: Refer to figures |
| Storage Instruction | Store at -20°C for up to 1 year from the date of receipt, and avoid repeat freeze-thaw cycles. |

TARGET INFORMATION

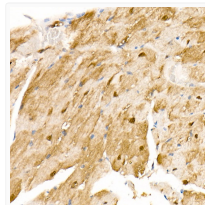
| | |
|--------------------|--|
| Gene ID | 6271 |
| Gene Symbol | S100A1 |
| UniProt ID | S10A1_HUMAN |
| Immunogen Region | 1-94 |
| Immunogen Sequence | MGSELETAMETLINVFHAHS GKEGDKYKLSKELKELLQT ELSGFLDAQKDVAVDKVMK ELDENGDFQYEVVLLVA ALTVACNFFWENS |
| Specificity | Recombinant fusion protein containing a sequence corresponding to amino acids 1-94 of human S100/S100A1 (NP_006262.1). |

ADDITIONAL INFORMATION

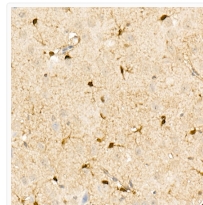
Note STRICTLY FOR FURTHER SCIENTIFIC RESEARCH USE ONLY (RUO). MUST NOT TO BE USED IN DIAGNOSTIC OR THERAPEUTIC APPLICATIONS.



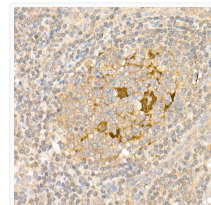
Immunohistochemistry analysis of S100/S100A1 in paraffin-embedded rat brain using S100/S100A1 Rabbit polyclonal antibody (STJ11103849) at dilution of 1:50 (40x lens). Perform high pressure antigen retrieval with 10 mM citrate buffer pH 6.0 before commencing with immunohistochemistry staining protocol.



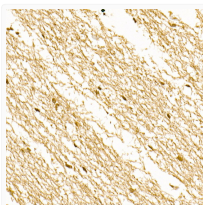
Immunohistochemistry analysis of S100/S100A1 in paraffin-embedded mouse heart using S100/S100A1 Rabbit polyclonal antibody (STJ11103849) at dilution of 1:50 (40x lens). Perform high pressure antigen retrieval with 10 mM citrate buffer pH 6.0 before commencing with immunohistochemistry staining protocol.



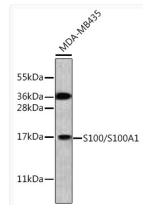
Immunohistochemistry analysis of S100/S100A1 in paraffin-embedded mouse brain using S100/S100A1 Rabbit polyclonal antibody (STJ11103849) at dilution of 1:50 (40x lens). Perform high pressure antigen retrieval with 10 mM citrate buffer pH 6.0 before commencing with immunohistochemistry staining protocol.



Immunohistochemistry analysis of S100/S100A1 in paraffin-embedded human tonsil using S100/S100A1 Rabbit polyclonal antibody (STJ11103849) at dilution of 1:50 (40x lens). Perform high pressure antigen retrieval with 10 mM citrate buffer pH 6.0 before commencing with immunohistochemistry staining protocol.



Immunohistochemistry analysis of S100/S100A1 in paraffin-embedded human brain using S100/S100A1 Rabbit polyclonal antibody (STJ11103849) at dilution of 1:50 (40x lens). Perform high pressure antigen retrieval with 10 mM citrate buffer pH 6.0 before commencing with immunohistochemistry staining protocol.



Western blot analysis of lysates from MDA-MB435 cells, using S100/S100A1 Rabbit polyclonal antibody (STJ11103849). Secondary antibody: HRP Goat Anti-Rabbit IgG (H+L) (STJS000856) at 1:10000 dilution. Lysates/proteins: 25 Mu g per lane. Blocking buffer: 3% nonfat dry milk in TBST.