

Anti-CDK6 antibody (226-326) (STJ11103846)

GENERAL INFORMATION

| | |
|---------------|--------------------------|
| Product Type | Primary antibodies |
| Applications | WB/IHC-P/IF/ICC/IP/ELISA |
| Host / Source | Rabbit |
| Reactivity | Human/Mouse |

PRODUCT PROPERTIES

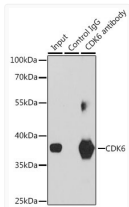
| | |
|---------------------|--|
| Clonality | Polyclonal |
| Concentration | Lot specific |
| Conjugation | Unconjugated |
| Purification | Affinity purification |
| Dilution Range | WB:1:500-1:1000 IHC-P:1:50-1:200 IF/CC:1:50-1:200 IP:0.5 Mu g-4 Mu g antibody for 200 Mu g extracts of whole cells ELISA:Recommended starting concentration is 1 Mu g/mL. Please optimize the concentration based on your specif |
| Formulation | PBS with 0.09% Sodium Azide, 50% Glycerol, pH 7.3. |
| Isotype | IgG |
| Molecular Weight | Protein Mw: 37kDa Observed Mw: 40kDa |
| Storage Instruction | Store at-20°C for up to 1 year from the date of receipt, and avoid repeat freeze-thaw cycles. |

TARGET INFORMATION

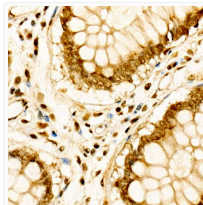
| | |
|--------------------|--|
| Gene ID | 1021 |
| Gene Symbol | CDK6 |
| UniProt ID | CDK6_HUMAN |
| Immunogen Region | 226-326 |
| Immunogen Sequence | DQLGKILDVIGLPGEEDWPR DVALPRQAFHKSQAQPIEKF VTDIDELGKDLLLKCLTFNP AKRISAYSALSHPYFQDLER CKENLDSHLPPSQNTSELNT A |
| Specificity | Recombinant fusion protein containing a sequence corresponding to amino acids 226-326 of human CDK6 (NP_001250.1). |

ADDITIONAL INFORMATION

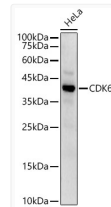
Note STRICTLY FOR FURTHER SCIENTIFIC RESEARCH USE ONLY (RUO). MUST NOT TO BE USED IN DIAGNOSTIC OR THERAPEUTIC APPLICATIONS.



Immunoprecipitation analysis of 200 Mu g extracts of Jurkat cells, using 3 Mu g CDK6 antibody (STJ11103846). Western blot was performed from the immunoprecipitate using CDK6 antibody (STJ11103846) at a dilution of 1:1000.



Immunohistochemistry analysis of CDK6 in paraffin-embedded human colon carcinoma using CDK6 Rabbit polyclonal antibody (STJ11103846) at dilution of 1:100 (40x lens). Perform high pressure antigen retrieval with 10 mM citrate buffer pH 6.0 before commencing with immunohistochemistry staining protocol.



Western blot analysis of lysates from HeLa cells, using CDK6 Rabbit polyclonal antibody (STJ11103846) at 1:900 dilution. Secondary antibody: HRP Goat Anti-Rabbit IgG (H+L) (STJS000856) at 1:10000 dilution. Lysates/proteins: 25 Mu g per lane. Blocking buffer: 3% nonfat dry milk in TBST. Detection: ECL Enhanced Kit. Exposure time: 30s.