

## Anti-CALCA antibody (1-141) (STJ11103842)

### GENERAL INFORMATION

Product Type	Primary antibodies
Applications	WB/ELISA
Host / Source	Rabbit
Reactivity	Human/Mouse/Rat

### PRODUCT PROPERTIES

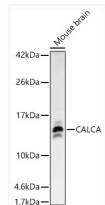
Clonality	Polyclonal
Concentration	Lot specific
Conjugation	Unconjugated
Purification	Affinity purification
Dilution Range	WB:1:500-1:2000 ELISA:Recommended starting concentration is 1 Mu g/mL. Please optimize the concentration based on your specific assay requirements.
Formulation	PBS with 0.02% Sodium Azide, 50% Glycerol, pH 7.3.
Isotype	IgG
Molecular Weight	Protein Mw: 13kDa/15kDa Observed Mw: 14kDa
Storage Instruction	Store at -20°C for up to 1 year from the date of receipt, and avoid repeat freeze-thaw cycles.

### TARGET INFORMATION

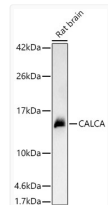
Gene ID	<a href="#">796</a> <a href="#">796</a>
Gene Symbol	<a href="#">CALCA</a> <a href="#">CALCA</a>
UniProt ID	<a href="#">CALC_HUMAN</a> <a href="#">CALCA_HUMAN</a>
Immunogen Region	1-141
Immunogen Sequence	MGFQKFSPLFALSILVLLQA GSLHAAPFRSALESSPADPA TLSEDEARLLLLAALVQDYVQ MKASELEQEQRREGSSLDSP RSKRCGNLSTCMLGTYTQDF NKFHTFPQTAIGVGAPGKKR DMSSDLERDHRPHVSMQPNA N
Specificity	Recombinant fusion protein containing a sequence corresponding to amino acids 1-141 of human CALCA (NP_001029124.1).

### ADDITIONAL INFORMATION

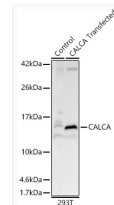
Note STRICTLY FOR FURTHER SCIENTIFIC RESEARCH USE ONLY (RUO). MUST NOT TO BE USED IN DIAGNOSTIC OR THERAPEUTIC APPLICATIONS.



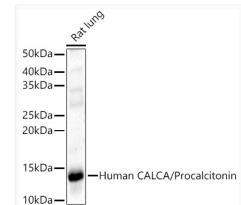
Western blot analysis of lysates from Mouse brain, using CALCA Rabbit polyclonal antibody (STJ11103842) at 1:500 dilution. Secondary antibody: HRP Goat Anti-Rabbit IgG (H+L) (STJS000856) at 1:10000 dilution. Lysates/proteins: 25 Mu g per lane. Blocking buffer: 3% nonfat dry milk in TBST. Detection: ECL Basic Kit. Exposure time: 45s.



Western blot analysis of lysates from Rat brain, using CALCA Rabbit polyclonal antibody (STJ11103842) at 1:500 dilution. Secondary antibody: HRP Goat Anti-Rabbit IgG (H+L) (STJS000856) at 1:10000 dilution. Lysates/proteins: 25 Mu g per lane. Blocking buffer: 3% nonfat dry milk in TBST. Detection: ECL Basic Kit. Exposure time: 3s.



Western blot analysis of lysates from wild type (WT) and 293T cells transfected with CALCA, using CALCA Rabbit polyclonal antibody (STJ11103842) at 1:500 dilution. Secondary antibody: HRP Goat Anti-Rabbit IgG (H+L) (STJS000856) at 1:10000 dilution. Lysates/proteins: 25 Mu g per lane. Blocking buffer: 3% nonfat dry milk in TBST. Detection: ECL Basic Kit. Exposure time: 1s.



Western blot analysis of lysates from Rat lung, using CALCA Rabbit polyclonal antibody (STJ11103842) at 1:400 dilution. Secondary antibody: HRP Goat Anti-Rabbit IgG (H+L) (STJS000856) at 1:10000 dilution. Lysates/proteins: 25 Mu g per lane. Blocking buffer: 3% nonfat dry milk in TBST. Detection: ECL Enhanced Kit. Exposure time: 180s.