

Anti-TADA2B antibody (150-322) (STJ11103841)

GENERAL INFORMATION

Product Type	Primary antibodies
Applications	WB/ELISA
Host / Source	Rabbit
Reactivity	Human/Mouse

PRODUCT PROPERTIES

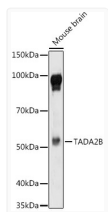
Clonality	Polyclonal
Concentration	Lot specific
Conjugation	Unconjugated
Purification	Affinity purification
Dilution Range	WB:1:500-1:1000 ELISA:Recommended starting concentration is 1 μ g/mL. Please optimize the concentration based on your specific assay requirements.
Formulation	PBS with 0.01% Thimerosal, 50% Glycerol, pH 7.3.
Isotype	IgG
Molecular Weight	Protein Mw: 48kDa Observed Mw: 55kDa
Storage Instruction	Store at -20°C for up to 1 year from the date of receipt, and avoid repeat freeze-thaw cycles.

TARGET INFORMATION

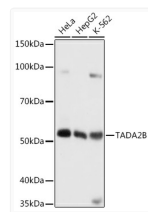
Gene ID	93624
Gene Symbol	TADA2B
UniProt ID	TAD2B_HUMAN
Immunogen Region	150-322
Immunogen Sequence	PLPLDISVAEQQLGYMPL RDDYEIEYDQDAETLISGLS VNYDDDDVEIELKRAHVDMY VRKLKERQRRKNIARDYNLV PAFLGKDKKEKEKALKRKIT KEEKELRLKLRPLYQFMSCK EFDLLENMHKEKMLRAKIR ELQRYRRNGITKMEESAIEYE AARHKREKRKENK
Specificity	Recombinant fusion protein containing a sequence corresponding to amino acids 150-322 of human TADA2B (NP_689506.2).

ADDITIONAL INFORMATION

Note STRICTLY FOR FURTHER SCIENTIFIC RESEARCH USE ONLY (RUO). MUST NOT TO BE USED IN DIAGNOSTIC OR THERAPEUTIC APPLICATIONS.



Western blot analysis of various lysates using TADA2B Rabbit polyclonal antibody (STJ11103841) at 1:1000 dilution. Secondary antibody: HRP Goat Anti-Rabbit IgG (H+L) (STJS000856) at 1:10000 dilution. Lysates/proteins: 25 μ g per lane. Blocking buffer: 3% nonfat dry milk in TBST. Detection: ECL Basic Kit. Exposure time: 180s.



Western blot analysis of various lysates using TADA2B Rabbit polyclonal antibody (STJ11103841) at 1:1000 dilution. Secondary antibody: HRP Goat Anti-Rabbit IgG (H+L) (STJS000856) at 1:10000 dilution. Lysates/proteins: 25 μ g per lane. Blocking buffer: 3% nonfat dry milk in TBST. Detection: ECL Basic Kit. Exposure time: 10s.