

Anti-NR4A1 antibody (200-300) (STJ11103838)

GENERAL INFORMATION

Product Type	Primary antibodies
Applications	WB/IF/ICC/ELISA
Host / Source	Rabbit
Reactivity	Human

PRODUCT PROPERTIES

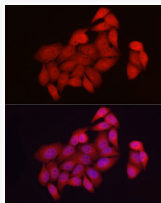
Clonality	Polyclonal
Concentration	Lot specific
Conjugation	Unconjugated
Purification	Affinity purification
Dilution Range	WB:1:500-1:1000 IF/CC:1:50-1:200 ELISA:Recommended starting concentration is 1 Mu g/mL. Please optimize the concentration based on your specific assay requirements.
Formulation	PBS with 0.05% Proclin300, 50% Glycerol, pH 7.3.
Isotype	IgG
Molecular Weight	Protein Mw: 64kDa Observed Mw: 64-80kDa
Storage Instruction	Store at -20°C for up to 1 year from the date of receipt, and avoid repeat freeze-thaw cycles.

TARGET INFORMATION

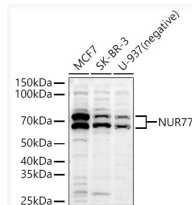
Gene ID	3164
Gene Symbol	NR4A1
UniProt ID	NR4A1_HUMAN
Immunogen Region	200-300
Immunogen Sequence	PSLAQSP LKLFPSQATHQLG EGESYSMP TAFPLAP TSPH LEGSGILDPTVTSTKARSGA PGGSEGRCAVCGDNASCQHY GVRTCEGCKGFFKRTVQKNA K
Specificity	A synthetic peptide corresponding to a sequence within amino acids 200-300 of human NUR77 (NP_002126.2).

ADDITIONAL INFORMATION

Note **STRICTLY FOR FURTHER SCIENTIFIC RESEARCH USE ONLY (RUO). MUST NOT TO BE USED IN DIAGNOSTIC OR THERAPEUTIC APPLICATIONS.**



Immunofluorescence analysis of HeLa cells using NUR77 Rabbit polyclonal antibody (STJ11103838) at dilution of 1:50 (40x lens). Blue: DAPI for nuclear staining.



Western blot analysis of various lysates, using NUR77 antibody (STJ11103838) at 1:1000 dilution. Secondary antibody: HRP Goat Anti-Rabbit IgG (H+L) (STJS000856) at 1:10000 dilution. Lysates/proteins: 25 Mu g per lane. Blocking buffer: 3% nonfat dry milk in TBST. Detection: ECL Basic Kit. Exposure time: 30s.