

Anti-AQP2 antibody (147-271) (STJ11103836)

GENERAL INFORMATION

Product Type	Primary antibodies
Applications	IHC-P/ELISA
Host / Source	Rabbit
Reactivity	Mouse

PRODUCT PROPERTIES

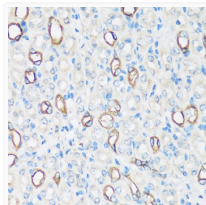
Clonality	Polyclonal
Concentration	Lot specific
Conjugation	Unconjugated
Purification	Affinity purification
Dilution Range	IHC-P:1:50-1:200 ELISA:Recommended starting concentration is 1 µg/mL. Please optimize the concentration based on your specific assay requirements.
Formulation	PBS with 0.01% Thimerosal, 50% Glycerol, pH 7.3.
Isotype	IgG
Molecular Weight	Protein Mw: 29kDa Observed Mw: Refer to figures
Storage Instruction	Store at -20°C for up to 1 year from the date of receipt, and avoid repeat freeze-thaw cycles.

TARGET INFORMATION

Gene ID	359
Gene Symbol	AQP2
UniProt ID	AQP2_HUMAN
Immunogen Region	147-271
Immunogen Sequence	ASTDERRGENPGTPALSIGF SVALGHLLGIHYTGCSMNPA RSLAPAVVTGKFDHWWFWI GPLVGAILGSLLYNYVLFPP AKLSERLAVLKGLEPDTDW EEREVRRRQSVLHSPQSLP RGTKA
Specificity	Recombinant fusion protein containing a sequence corresponding to amino acids 147-271 of human AQP2 (NP_000477.1).

ADDITIONAL INFORMATION

Note **STRICTLY FOR FURTHER SCIENTIFIC RESEARCH USE ONLY (RUO). MUST NOT TO BE USED IN DIAGNOSTIC OR THERAPEUTIC APPLICATIONS.**



Immunohistochemistry analysis of AQP2 in paraffin-embedded mouse kidney using AQP2 Rabbit polyclonal antibody (STJ11103836) at dilution of 1:100 (40x lens). Perform microwave antigen retrieval with 10 mM PBS buffer pH 7.2 before commencing with immunohistochemistry staining protocol.