

Anti-DMP1 antibody (254-513) (STJ11103821)

GENERAL INFORMATION

Product Type	Primary antibodies
Applications	WB/ELISA
Host / Source	Rabbit
Reactivity	Human/Mouse

PRODUCT PROPERTIES

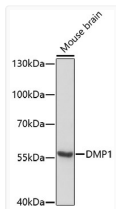
Clonality	Polyclonal
Concentration	Lot specific
Conjugation	Unconjugated
Purification	Affinity purification
Dilution Range	WB:1:500-1:2000 ELISA:Recommended starting concentration is 1 μ g/mL. Please optimize the concentration based on your specific assay requirements.
Formulation	PBS with 0.02% Sodium Azide, 50% Glycerol, pH 7.3.
Isotype	IgG
Molecular Weight	Protein Mw: 56kDa Observed Mw: 68kDa
Storage Instruction	Store at -20°C for up to 1 year from the date of receipt, and avoid repeat freeze-thaw cycles.

TARGET INFORMATION

Gene ID	1758
Gene Symbol	DMP1
UniProt ID	DMP1_HUMAN
Immunogen Region	254-513
Immunogen Sequence	SGGSQLEHPSRKIFRKSRI SEEDDRSELDNNTMEEVKS DSTENSNSRDTGLSQPRRDS KGDSQEDSKENLSQEESQNV DGPSSSESSQEANLSSQENSS ESQEEVVSESRGDNPDPTTS YVEDQEDSDSSEEDSSHTLS HSKSESREEQADSESESLN FSEESPEPDEDENSSSQEGL QSHSSSAESQSEESHSEEDD SDSQDSSRSKEDSNSTESKS SSEEDGQLKNIIESRKL
Specificity	Recombinant fusion protein containing a sequence corresponding to amino acids 254-513 of human DMP1 (NP_004398.1).

ADDITIONAL INFORMATION

Note **STRICTLY FOR FURTHER SCIENTIFIC RESEARCH USE ONLY (RUO). MUST NOT TO BE USED IN DIAGNOSTIC OR THERAPEUTIC APPLICATIONS.**



Western blot analysis of lysates from mouse brain, using DMP1 Rabbit polyclonal antibody (STJ11103821) at 1:1000 dilution. Secondary antibody: HRP Goat Anti-Rabbit IgG (H+L) (STJS000856) at 1:10000 dilution. Lysates/proteins: 25 μ g per lane. Blocking buffer: 3% nonfat dry milk in TBST. Detection: ECL Basic Kit. Exposure time: 5min.