

Anti-AIFM1 antibody (334-613) (STJ11103814)

GENERAL INFORMATION

Product Type	Primary antibodies
Applications	WB/IHC-P/IF/ICC/ELISA
Host / Source	Rabbit
Reactivity	Human/Mouse/Rat

PRODUCT PROPERTIES

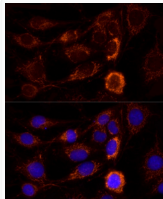
Clonality	Polyclonal
Concentration	Lot specific
Conjugation	Unconjugated
Purification	Affinity purification
Dilution Range	WB:1:500-1:1000 IHC-P:1:50-1:200 IF/CC:1:50-1:200 ELISA:Recommended starting concentration is 1 Mu g/mL. Please optimize the concentration based on your specific assay requirements.
Formulation	PBS with 0.02% Sodium Azide, 50% Glycerol, pH 7.3.
Isotype	IgG
Molecular Weight	Protein Mw: 67kDa Observed Mw: 60kDa
Storage Instruction	Store at -20°C for up to 1 year from the date of receipt, and avoid repeat freeze-thaw cycles.

TARGET INFORMATION

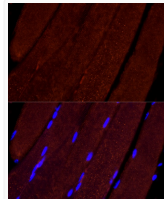
Gene ID	9131
Gene Symbol	AIFM1
UniProt ID	AIFM1_HUMAN
Immunogen Region	334-613
Immunogen Sequence	FPEKGNMGKILPEYLSNWTM EKVRREGVKVMPNAIVQSVG VSSGKLLIKLKDGRKVEDH IVAAVGLEPNVELAKTGGLE IDSDFGGFRVNAELQARSNI WVAGDAACFYDIKLGRRRVE HHDHAVVSGRLAGENMTGAA KPYWHQSMFWSDLGPDVGYE AIGLVDSLLPTVGVFAKATA QDNPKSATEQSGTGIRSESE TESEASEITIPPSTPAVPQA PVQGEDYGKGVIFYLRDKV
Specificity	Recombinant fusion protein containing a sequence corresponding to amino acids 334-613 of human AIF (NP_004199.1).

ADDITIONAL INFORMATION

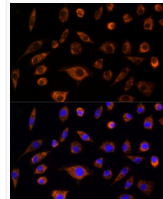
Note STRICTLY FOR FURTHER SCIENTIFIC RESEARCH USE ONLY (RUO). MUST NOT TO BE USED IN DIAGNOSTIC OR THERAPEUTIC APPLICATIONS.



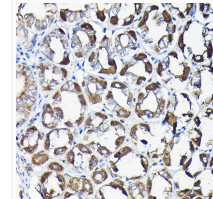
Immunofluorescence analysis of C6 cells using AIF antibody (STJ11103814) at dilution of 1:100 (40x lens). Blue: DAPI for nuclear staining.



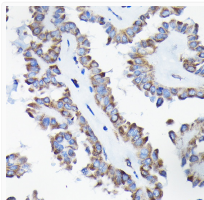
Immunofluorescence analysis of Mouse skeletal muscle cells using AIF antibody (STJ11103814) at dilution of 1:100 (40x lens). Blue: DAPI for nuclear staining.



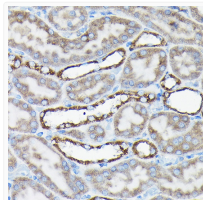
Immunofluorescence analysis of L929 cells using AIF antibody (STJ11103814) at dilution of 1:100 (40x lens). Blue: DAPI for nuclear staining.



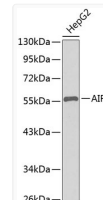
Immunohistochemistry analysis of paraffin-embedded mouse stomach using AIF Rabbit polyclonal antibody (STJ11103814) at dilution of 1:50 (40x lens). Perform high pressure antigen retrieval with 10 mM citrate buffer pH 6.0 before commencing with immunohistochemistry staining protocol.



Immunohistochemistry analysis of paraffin-embedded human thyroid cancer using AIF Rabbit polyclonal antibody (STJ11103814) at dilution of 1:50 (40x lens). Perform high pressure antigen retrieval with 10 mM citrate buffer pH 6.0 before commencing with immunohistochemistry staining protocol.



Immunohistochemistry analysis of paraffin-embedded rat kidney using AIF Rabbit polyclonal antibody (STJ11103814) at dilution of 1:50 (40x lens). Perform high pressure antigen retrieval with 10 mM citrate buffer pH 6.0 before commencing with immunohistochemistry staining protocol.



Western blot analysis of extracts of HepG2 cells, using AIF antibody (STJ11103814). Secondary antibody: HRP Goat Anti-Rabbit IgG (H+L) (STJS000856) at 1:10000 dilution. Lysates/proteins: 25 Mu g per lane. Blocking buffer: 3% nonfat dry milk in TBST.