

Anti-ROCK1 antibody (400-660) (STJ11103795)

GENERAL INFORMATION

Product Type	Primary antibodies
Applications	WB/IF/ICC/IP/ELISA
Host / Source	Rabbit
Reactivity	Human/Mouse/Rat

PRODUCT PROPERTIES

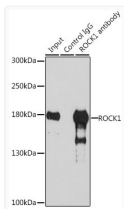
Clonality	Polyclonal
Concentration	Lot specific
Conjugation	Unconjugated
Purification	Affinity purification
Dilution Range	WB:1:500-1:2000 IP:0.5 Mu g-4 Mu g antibody for 200 Mu g extracts of whole cells ELISA:Recommended starting concentration is 1 Mu g/mL. Please optimize the concentration based on your specific assay requirements.
Formulation	PBS with 0.02% Sodium Azide, 50% Glycerol, pH 7.3.
Isotype	IgG
Molecular Weight	Protein Mw: 158kDa Observed Mw: 158kDa
Storage Instruction	Store at -20°C for up to 1 year from the date of receipt, and avoid repeat freeze-thaw cycles.

TARGET INFORMATION

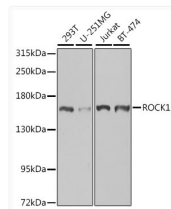
Gene ID	6093
Gene Symbol	ROCK1
UniProt ID	ROCK1_HUMAN
Immunogen Region	400-660
Immunogen Sequence	YSNRRYLSSANPNDNRTSSN ADKSLQESLQKTIYKLEEQL HNEMQLKDEMEQKCRTSNIK LDKIMKELDEEGNQRRLNES TVSQIEKEKMLLQHRINEYQ RKAQEENKRRNVENEVSTL KDQLEDLKKVVSQNSQLANEK LSQKQKLEEAANDLLRTEESD TAVRLRKSHTEMSKSISQLE SLNRELQERNRILENSKSQT DKDY YQLQAILEAERRDRGH DSEMIGDLQARITSLQEEV
Specificity	Recombinant fusion protein containing a sequence corresponding to amino acids 400-660 of human ROCK1 (NP_005397.1).

ADDITIONAL INFORMATION

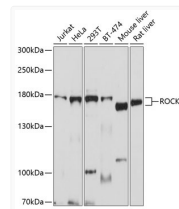
Note STRICTLY FOR FURTHER SCIENTIFIC RESEARCH USE ONLY (RUO). MUST NOT TO BE USED IN DIAGNOSTIC OR THERAPEUTIC APPLICATIONS.



Immunoprecipitation analysis of 200 Mu g extracts of 293T cells, using 3 Mu g ROCK1 antibody (STJ11103795). Western blot was performed from the immunoprecipitate using ROCK1 antibody (STJ11103795) at a dilution of 1:1000.



Western blot analysis of various lysates using ROCK1 Rabbit polyclonal antibody (STJ11103795) at 1:1000 dilution. Secondary antibody: HRP Goat Anti-Rabbit IgG (H+L) (STJS000856) at 1:10000 dilution. Lysates/proteins: 25 Mu g per lane. Blocking buffer: 3% nonfat dry milk in TBST. Detection: ECL Basic Kit. Exposure time: 90s.



Western blot analysis of various lysates using ROCK1 Rabbit polyclonal antibody (STJ11103795) at 1:1000 dilution. Secondary antibody: HRP Goat Anti-Rabbit IgG (H+L) (STJS000856) at 1:10000 dilution. Lysates/proteins: 25 Mu g per lane. Blocking buffer: 3% nonfat dry milk in TBST. Detection: ECL Enhanced Kit. Exposure time: 10s.