

## Anti-MonoMethyl-Histone H2B-K116 antibody [S3791RM] (STJ11103791)

### GENERAL INFORMATION

Product Type	Primary antibodies
Applications	IHC-P/ELISA
Host / Source	Rabbit
Reactivity	Human/Mouse/Rat/Other

### PRODUCT PROPERTIES

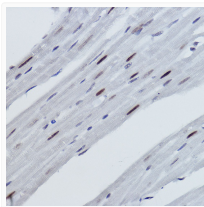
Clonality	Monoclonal
Concentration	Lot specific
Conjugation	Unconjugated
Purification	Affinity purification
Dilution Range	IHC-P:1:50-1:200 ELISA:Recommended starting concentration is 1 µg/mL. Please optimize the concentration based on your specific assay requirements.
Formulation	PBS with 0.02% Sodium Azide, 0.05% BSA, 50% Glycerol, pH 7.3.
Isotype	IgG
Molecular Weight	Protein Mw: 14kDa Observed Mw: Refer to figures
Storage Instruction	Store at -20°C for up to 1 year from the date of receipt, and avoid repeat freeze-thaw cycles.

### TARGET INFORMATION

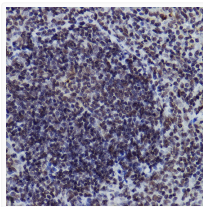
Gene ID	<a href="#">3017/8339/8343/8344/8346/8347/8349</a>
Gene Symbol	<a href="#">H2BC4.H2BC6.H2BC7.H2BC8.H2BC10.H2BC21</a>
UniProt ID	<a href="#">H2B1C_HUMAN</a> <a href="#">H2B2E_HUMAN</a>
Specificity	A synthesized peptide derived from human Histone H2B (mono methyl K116).

### ADDITIONAL INFORMATION

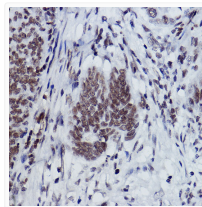
Note **STRICTLY FOR FURTHER SCIENTIFIC RESEARCH USE ONLY (RUO). MUST NOT TO BE USED IN DIAGNOSTIC OR THERAPEUTIC APPLICATIONS.**



Immunohistochemistry analysis of MonoMethyl-Histone H2B-K116 in paraffin-embedded rat heart using MonoMethyl-Histone H2B-K116 Rabbit monoclonal antibody (STJ11103791) at dilution of 1:100 (40x lens). Perform high pressure antigen retrieval with 10 mM citrate buffer pH 6.0 before commencing with immunohistochemistry staining protocol.



Immunohistochemistry analysis of MonoMethyl-Histone H2B-K116 in paraffin-embedded mouse spleen using MonoMethyl-Histone H2B-K116 Rabbit monoclonal antibody (STJ11103791) at dilution of 1:100 (40x lens). Perform high pressure antigen retrieval with 10 mM citrate buffer pH 6.0 before commencing with immunohistochemistry staining protocol.



Immunohistochemistry analysis of MonoMethyl-Histone H2B-K116 in paraffin-embedded human colon carcinoma using MonoMethyl-Histone H2B-K116 Rabbit monoclonal antibody (STJ11103791) at dilution of 1:100 (40x lens). Perform high pressure antigen retrieval with 10 mM citrate buffer pH 6.0 before commencing with immunohistochemistry staining protocol.