

Anti-FGF1 antibody (2-155) (STJ11103790)

GENERAL INFORMATION

Product Type	Primary antibodies
Applications	IF/ICC/ELISA
Host / Source	Rabbit
Reactivity	Human/Mouse/Rat

PRODUCT PROPERTIES

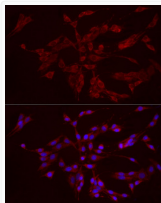
Clonality	Polyclonal
Concentration	Lot specific
Conjugation	Unconjugated
Purification	Affinity purification
Dilution Range	IF/ICC:1:50-1:200 ELISA:Recommended starting concentration is 1 µg/mL. Please optimize the concentration based on your specific assay requirements.
Formulation	PBS with 0.05% Proclin300, 50% Glycerol, pH 7.3.
Isotype	IgG
Molecular Weight	Protein Mw: 17kDa Observed Mw: Refer to Figures
Storage Instruction	Store at -20°C for up to 1 year from the date of receipt, and avoid repeat freeze-thaw cycles.

TARGET INFORMATION

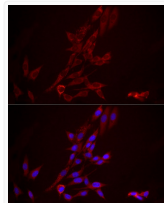
Gene ID	2246
Gene Symbol	FGF1
UniProt ID	FGF1_HUMAN
Immunogen Region	2-155
Immunogen Sequence	AEGEITFTALTEKFNLPYG NYKKPKLLYCSNGGHFLRIL PDGTVDGTRDRSDQHIQLQL SAESVGEVYIKSTETGQYLA MDTDGLLYGSQTPNEECLFL ERLEENHYNTYISKKHAEN WFGVGLKKNKSGCKRGRPRTHYG QKAILFLPLVSSD
Specificity	Recombinant fusion protein containing a sequence corresponding to amino acids 2-155 of human FGF1 (NP_000791.1).

ADDITIONAL INFORMATION

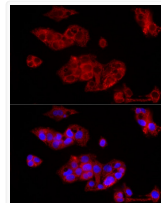
Note STRICTLY FOR FURTHER SCIENTIFIC RESEARCH USE ONLY (RUO). MUST NOT TO BE USED IN DIAGNOSTIC OR THERAPEUTIC APPLICATIONS.



Immunofluorescence analysis of PC-12 cells using FGF1 Rabbit polyclonal antibody (STJ11103790) at dilution of 1:100 (40x lens). Secondary antibody: Cy3 Goat Anti-Rabbit IgG (H+L) at 1:500 dilution. Blue: DAPI for nuclear staining.



Immunofluorescence analysis of NIH/3T3 cells using FGF1 Rabbit polyclonal antibody (STJ11103790) at dilution of 1:100 (40x lens). Secondary antibody: Cy3 Goat Anti-Rabbit IgG (H+L) at 1:500 dilution. Blue: DAPI for nuclear staining.



Immunofluorescence analysis of HepG2 cells using FGF1 Rabbit polyclonal antibody (STJ11103790) at dilution of 1:100 (40x lens). Secondary antibody: Cy3 Goat Anti-Rabbit IgG (H+L) at 1:500 dilution. Blue: DAPI for nuclear staining.