

## Anti-Phospho-Smad3-S423/S425 antibody (STJ11103777)

### GENERAL INFORMATION

Product Type	Primary antibodies
Applications	WB/IHC-P/ELISA
Host / Source	Rabbit
Reactivity	Human/Mouse/Rat

### PRODUCT PROPERTIES

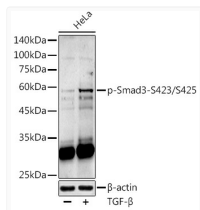
Clonality	Polyclonal
Concentration	Lot specific
Conjugation	Unconjugated
Purification	Affinity purification
Dilution Range	WB:1:500-1:1000 IHC-P:1:50-1:200 ELISA:Recommended starting concentration is 1 Mu g/mL. Please optimize the concentration based on your specific assay requirements.
Formulation	PBS with 0.05% Proclin300, 50% Glycerol, pH 7.3.
Isotype	IgG
Molecular Weight	Protein Mw: 48kDa Observed Mw: 55kDa
Storage Instruction	Store at -20°C for up to 1 year from the date of receipt, and avoid repeat freeze-thaw cycles.

### TARGET INFORMATION

Gene ID	<a href="#">4088</a>
Gene Symbol	<a href="#">SMAD3</a>
UniProt ID	<a href="#">SMAD3_HUMAN</a>
Specificity	A phospho synthetic peptide corresponding to residues surrounding S423/S425 of Human SMAD3.

### ADDITIONAL INFORMATION

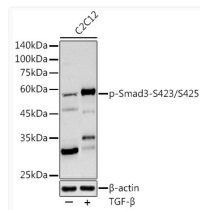
Note STRICTLY FOR FURTHER SCIENTIFIC RESEARCH USE ONLY (RUO). MUST NOT TO BE USED IN DIAGNOSTIC OR THERAPEUTIC APPLICATIONS.



Western blot analysis of various lysates using (STJ11103777) at 1:1000 dilution. HeLa cells were treated by TGF-Beta (10 ng/ml) at 37 °C for 30 minutes.

Secondary antibody: HRP-conjugated Goat anti-Rabbit IgG (H+L) (STJS000856) at 1:10000 dilution.

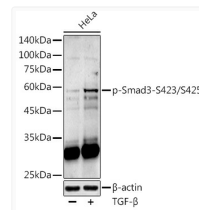
Lysates/proteins: 25 Mu g per lane.  
Blocking buffer: 3% nonfat dry milk in TBST.  
Detection: ECL Basic Kit  
Exposure time: 90s.



Western blot analysis of various lysates using (STJ11103777) at 1:1000 dilution. C2C12 cells were treated by TGF-Beta (10 ng/ml) at 37 °C for 30 minutes.

Secondary antibody: HRP-conjugated Goat anti-Rabbit IgG (H+L) (STJS000856) at 1:10000 dilution.

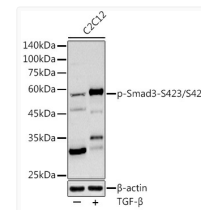
Lysates/proteins: 25 Mu g per lane.  
Blocking buffer: 3% nonfat dry milk in TBST.  
Detection: ECL Basic Kit  
Exposure time: 180s.



Western blot analysis of various lysates using (STJ11103777) at 1:1000 dilution. HeLa cells were treated by TGF-β<sup>2</sup> (10 ng/ml) at 37C for 30 minutes.

Secondary antibody: HRP-conjugated Goat anti-Rabbit IgG (H+L) (STJS000856) at 1:10000 dilution.

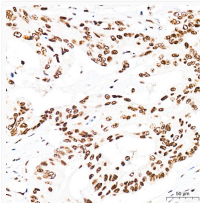
Lysates/proteins: 25 Mu g per lane.  
Blocking buffer: 3% nonfat dry milk in TBST.  
Detection: ECL Basic Kit  
Exposure time: 90s.



Western blot analysis of various lysates using (STJ11103777) at 1:1000 dilution. C2C12 cells were treated by TGF-β<sup>2</sup> (10 ng/ml) at 37C for 30 minutes.

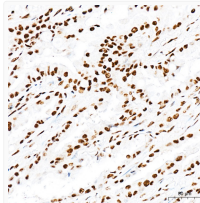
Secondary antibody: HRP-conjugated Goat anti-Rabbit IgG (H+L) (STJS000856) at 1:10000 dilution.

Lysates/proteins: 25 Mu g per lane.  
Blocking buffer: 3% nonfat dry milk in TBST.  
Detection: ECL Basic Kit  
Exposure time: 180s.



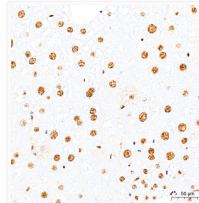
Immunohistochemistry analysis of paraffin-embedded Human colon carcinoma tissue using Phospho-Smad3-S423/S425 Rabbit pAb (STJ11103777) at a dilution of 1:200 (40x lens).

High pressure antigen retrieval was performed with 0.01 M citrate buffer (pH 6.0) prior to immunohistochemistry staining.



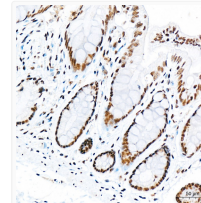
Immunohistochemistry analysis of paraffin-embedded Human lung tissue using Phospho-Smad3-S423/S425 Rabbit pAb (STJ11103777) at a dilution of 1:200 (40x lens).

High pressure antigen retrieval was performed with 0.01 M citrate buffer (pH 6.0) prior to immunohistochemistry staining.



Immunohistochemistry analysis of paraffin-embedded Mouse liver tissue using Phospho-Smad3-S423/S425 Rabbit pAb (STJ11103777) at a dilution of 1:200 (40x lens).

High pressure antigen retrieval was performed with 0.01 M citrate buffer (pH 6.0) prior to immunohistochemistry staining.



Immunohistochemistry analysis of paraffin-embedded Rat colon tissue using Phospho-Smad3-S423/S425 Rabbit pAb (STJ11103777) at a dilution of 1:200 (40x lens).

High pressure antigen retrieval was performed with 0.01 M citrate buffer (pH 6.0) prior to immunohistochemistry staining.