

Anti-Phospho-TDP-43/TARDB-S409/S410 antibody (STJ11103763)

GENERAL INFORMATION

Product Type	Primary antibodies
Applications	WB/DB/ELISA
Host / Source	Rabbit
Reactivity	Human

PRODUCT PROPERTIES

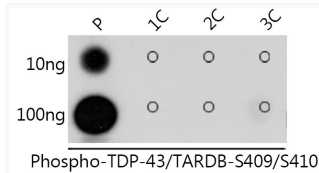
Clonality	Polyclonal
Concentration	Lot specific
Conjugation	Unconjugated
Purification	Affinity purification
Dilution Range	WB:1:500-1:2000 DB:1:500-1:1000 ELISA:Recommended starting concentration is 1 Mu g/mL. Please optimize the concentration based on your specific assay requirements.
Formulation	PBS with 0.05% Proclin300, 50% Glycerol, pH 7.3.
Isotype	IgG
Molecular Weight	Protein Mw: 45kDa Observed Mw: Refer to figures
Storage Instruction	Store at -20°C for up to 1 year from the date of receipt, and avoid repeat freeze-thaw cycles.

TARGET INFORMATION

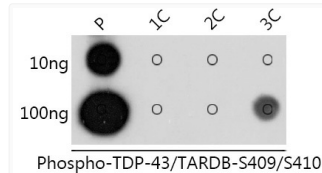
Gene ID	23435
Gene Symbol	TARDBP
UniProt ID	TADBP_HUMAN
Immunogen Sequence	SKSSGW
Specificity	A synthetic phosphorylated peptide around S409&S410 of human TDP-43/TARDB (NP_031401.1).

ADDITIONAL INFORMATION

Note STRICTLY FOR FURTHER SCIENTIFIC RESEARCH USE ONLY (RUO). MUST NOT TO BE USED IN DIAGNOSTIC OR THERAPEUTIC APPLICATIONS.



Dot-blot analysis of all sorts of peptides using Phospho-TDP-43/TARDB-S409/S410 antibody (STJ11103763) at 1:1000 dilution. Exposure time: 1s.



Dot-blot analysis of all sorts of peptides using Phospho-TDP-43/TARDB-S409/S410 antibody (STJ11103763) at 1:1000 dilution. Exposure time: 10s.