

Anti-Phospho-RPS6KA5-T581 antibody (STJ11103736)

GENERAL INFORMATION

Product Type	Primary antibodies
Applications	WB/ELISA
Host / Source	Rabbit
Reactivity	Rat

PRODUCT PROPERTIES

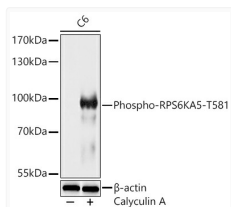
Clonality	Polyclonal
Concentration	Lot specific
Conjugation	Unconjugated
Purification	Affinity purification
Dilution Range	WB:1:500-1:1000 ELISA:Recommended starting concentration is 1 µg/mL. Please optimize the concentration based on your specific assay requirements.
Formulation	PBS with 0.01% Thimerosal, 50% Glycerol, pH 7.3.
Isotype	IgG
Molecular Weight	Protein Mw: 90kDa Observed Mw: 90kDa
Storage Instruction	Store at -20°C for up to 1 year from the date of receipt, and avoid repeat freeze-thaw cycles.

TARGET INFORMATION

Gene ID	9252
Gene Symbol	RPS6KA5
UniProt ID	KS6A5_HUMAN
Immunogen Sequence	KTPCFTLHYAAPELLNQNGY DESC DLWLSGLVILY TMLSGQ VPFQSHDRSLTCTSAVEIMK KIKKGD F SFEGEAWKNVSQE AKDLIQGLL TVDPNKRLKMS GLRYNEWLQDGSQ LSSNPLM TPDILGSSGA AVHTCVKATF HAFNKYKREGFCLQNVDKAP LAKRRKM KKTSTSTETRSSS SESSHSSSSHSHGKTTPTKT LQPSNP ADSNNPETLFQFSD SVA
Specificity	A synthetic phosphorylated peptide around T581 of human RPS6KA5 (NP_004746.2).

ADDITIONAL INFORMATION

Note STRICTLY FOR FURTHER SCIENTIFIC RESEARCH USE ONLY (RUO). MUST NOT TO BE USED IN DIAGNOSTIC OR THERAPEUTIC APPLICATIONS.



Western blot analysis of lysates from C6 cells using Phospho-RPS6KA5-T581 Rabbit pAb (STJ11103736) at 1:1000 dilution. C6 cells were treated by Calyculin A (100 nM) at 37C for 30 minutes after serum-starvation overnight. Secondary antibody: HRP-conjugated Goat anti-Rabbit IgG (H+L) (STJS000856) at 1:10000 dilution.
Lysates/proteins: 25 µg per lane.
Blocking buffer: 3% nonfat dry milk in TBST.
Detection: ECL Basic Kit
Exposure time: 60s.