

Anti-His-Tag antibody [S2MR] (STJ11103712)

GENERAL INFORMATION

| | |
|---------------|---------------------|
| Product Type | Primary antibodies |
| Applications | WB/IF/ICC/IP/ELISA |
| Host / Source | Rabbit |
| Reactivity | Species Independent |

PRODUCT PROPERTIES

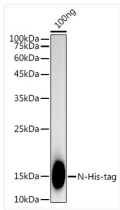
| | |
|---------------------|--|
| Clonality | Monoclonal |
| Concentration | Lot specific |
| Conjugation | Unconjugated |
| Purification | Affinity purification |
| Dilution Range | WB:1:10000-1:40000 IF/CC:1:50-1:200 IP:0.5 Mu g-4 Mu g antibody for 200 Mu g-400 Mu g extracts of whole cells ELISA:Recommended starting concentration is 1 Mu g/mL. Please optimize the concentration based on your specific assay requireme |
| Formulation | PBS with 0.05% Proclin300, 0.05% BSA, 50% Glycerol, pH 7.3. |
| Isotype | IgG |
| Molecular Weight | 16kDa |
| Storage Instruction | Store at -20°C for up to 1 year from the date of receipt, and avoid repeat freeze-thaw cycles. |

TARGET INFORMATION

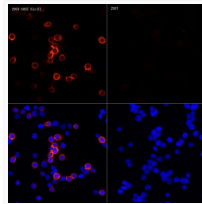
| | |
|-------------|---|
| Specificity | A synthetic peptide corresponding to His tag.The antibody may cross-react with a protein of unknown origin ~60kDa |
|-------------|---|

ADDITIONAL INFORMATION

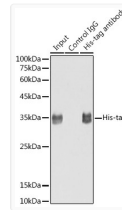
Note **STRICTLY FOR FURTHER SCIENTIFIC RESEARCH USE ONLY (RUO). MUST NOT TO BE USED IN DIAGNOSTIC OR THERAPEUTIC APPLICATIONS.**



Western blot analysis of lysates from His Protein, using Rabbit anti His-tag mAb (STJ11103712) at 1:5000 dilution.
 Secondary antibody: HRP-conjugated Goat anti-Rabbit IgG (H+L) (STJS000856) at 1:10000 dilution.
 Lysates/proteins: 25 Mu g per lane.
 Blocking buffer: 3% nonfat dry milk in TBST.
 Detection: ECL Basic Kit
 Exposure time: 10s.



Immunofluorescence analysis of 293T-SOST His (C) and 293T cells using Rabbit anti His-tag mAb (STJ11103712) at dilution of 1:200 (40x lens).
 Secondary antibody: Cy3-conjugated Goat anti-Rabbit IgG (H+L) (STJS001166) at 1:500 dilution.
 Blue: DAPI for nuclear staining.



Immunoprecipitation analysis of 300 Mu g extracts of 293T cells using 3 Mu g His-tag antibody (STJ11103712). Western blot was performed from the immunoprecipitate using His-tag antibody (STJ11103712) at a dilution of 1:30000.