

Anti-GFP-Tag antibody (1-238) [S1MR] (STJ11103711)

GENERAL INFORMATION

Product Type	Primary antibodies
Applications	WB/IF/ICC/IP/ELISA/ChIP
Host / Source	Rabbit
Reactivity	Species Independent

PRODUCT PROPERTIES

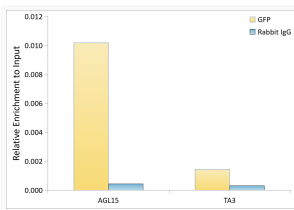
Clonality	Monoclonal
Concentration	Lot specific
Conjugation	Unconjugated
Purification	Affinity purification
Dilution Range	WB:1:50000-1:700000 IF/CC:1:50-1:200 IP:0.5 Mu g-4 Mu g antibody for 100 Mu g-400 Mu g extracts of whole cells ELISA:Recommended starting concentration is 1 Mu g/mL. Please optimize the concentration based on your specific assay requirem
Formulation	PBS with 0.05% Proclin300, 0.05% BSA, 50% Glycerol, pH 7.3.
Isotype	IgG
Molecular Weight	Protein Mw: 27kDa Observed Mw: 27kDa
Storage Instruction	Store at -20°C for up to 1 year from the date of receipt, and avoid repeat freeze-thaw cycles.

TARGET INFORMATION

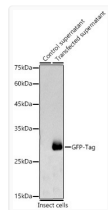
Immunogen Region	1-238
Immunogen Sequence	MSKGEELFTGVVPILVELDG DVNGHKFSVSGEGEGDATYG KLTCLKICTTGKLPVWPWPTL VTTLTYGVCQFSRYPDHMKR HDFSAMPEGYVQERTISF KDDGNYKTRAEVKFEGDRTL NRIELKIGDFKEDGNILGHK LEYNYNSHNVYITADKQKNG IKANFKTRHNIEDGGVQLAD HYQQNTPIGDGPVLLPDNHY LSTQSALSKDPNEKRDMVL LEFVTAAGITHGMDELYK
Specificity	Recombinant fusion protein containing a sequence corresponding to amino acids 1-238 of GFP.

ADDITIONAL INFORMATION

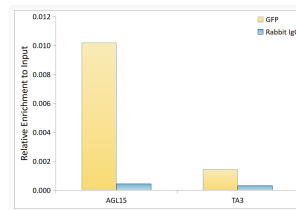
Note STRICTLY FOR FURTHER SCIENTIFIC RESEARCH USE ONLY (RUO). MUST NOT TO BE USED IN DIAGNOSTIC OR THERAPEUTIC APPLICATIONS.



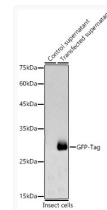
Chromatin immunoprecipitation was performed with cross-linked chromatin from *Arabidopsis thaliana* leaf cells transfected with GFP, using Rabbit anti GFP-Tag mAb (STJ11103711) and Rabbit IgG (STJ11105763). The amount of immunoprecipitated DNA was checked by quantitative PCR. Histogram compares the ratio of the immunoprecipitated DNA versus the input.



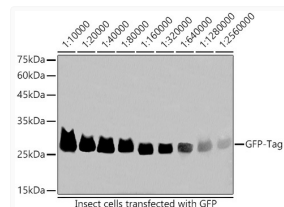
Lysates/proteins: 20 Mu g per lane. Blocking buffer: 3% nonfat dry milk in TBST. Detection: ECL Basic Kit (Exposure time: 30s.



Chromatin immunoprecipitation was performed with cross-linked chromatin from *Arabidopsis thaliana* leaf cells transfected with GFP, using Rabbit anti GFP-Tag mAb (STJ11103711) and Rabbit IgG (STJ11105763). The amount of immunoprecipitated DNA was checked by quantitative PCR. Histogram compares the ratio of the immunoprecipitated DNA versus the input.



Lysates/proteins: 20 Mu g per lane. Blocking buffer: 3% nonfat dry milk in TBST. Detection: ECL Basic Kit (Exposure time: 30s.



Lysates/proteins: 20 Mu g per lane. Blocking buffer: 3% nonfat dry milk in TBST. Detection: ECL Basic Kit (Exposure time: 3s.

