

Anti-GFP-Tag antibody (1-238) (STJ11103701)

GENERAL INFORMATION

Product Type	Primary antibodies
Applications	WB/IF/ICC
Host / Source	Rabbit
Reactivity	Species Independent

PRODUCT PROPERTIES

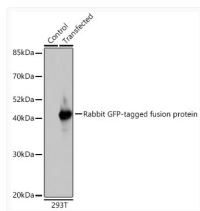
Clonality	Polyclonal
Concentration	Lot specific
Conjugation	Unconjugated
Purification	Affinity purification
Dilution Range	WB:1:2000-1:20000 IF/CC:1:50-1:200
Formulation	PBS with 0.05% Proclin300, 50% Glycerol, pH 7.3.
Isotype	IgG
Molecular Weight	Protein Mw: 27kDa Observed Mw: 25kDa
Storage Instruction	Store at -20°C for up to 1 year from the date of receipt, and avoid repeat freeze-thaw cycles.

TARGET INFORMATION

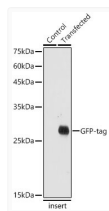
Immunogen Region	1-238
Immunogen Sequence	MSKGEELFTGVVPIVELDG DVNGHKFSVSGEGEGDATYG KLTCLKICTTGKLPVWPWPTL VTTLTYGVCQFSRYPDHMKR HDFFKSAMPEGYVQERTISF KDDGNYKTRAEVKFEGDTLV NRIELKIGIDFKEDGNILGHK LEYNYNSHNVIYITADKQKNG IKANFKTRHNIEDGGVQLAD HYQNTPIGDKGVPVLLPDNHY LSTQSALS KDPNEKRDMVL LEFVTAAGITHGMDELYK
Specificity	Recombinant fusion protein containing a sequence corresponding to amino acids 1-238 of GFP.

ADDITIONAL INFORMATION

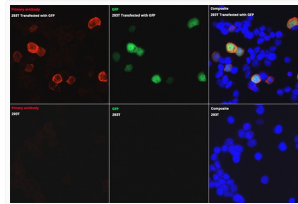
Note **STRICTLY FOR FURTHER SCIENTIFIC RESEARCH USE ONLY (RUO). MUST NOT TO BE USED IN DIAGNOSTIC OR THERAPEUTIC APPLICATIONS.**



Western blot analysis of extracts of normal 293T cells and 293T transfected with GFP-tagged fusion protein, using Rabbit anti GFP-Tag pAb (STJ11103701) at 1:1000 dilution.
 Secondary antibody: HRP-conjugated Goat anti-Rabbit IgG (H+L) (STJS000856) at 1:10000 dilution.
 Lysates/proteins: 25 µg per lane.
 Blocking buffer: 3% nonfat dry milk in TBST.
 Detection: ECL Basic Kit
 Exposure time: 10s.



Western blot analysis of extracts of normal Eukaryotic expression of GFP and Eukaryotic expression of GFP transfected with GFP Protein, using Rabbit anti GFP-Tag pAb (STJ11103701) at 1:20000 dilution.
 Secondary antibody: HRP-conjugated Goat anti-Rabbit IgG (H+L) (STJS000856) at 1:10000 dilution.
 Lysates/proteins: 25 µg per lane.
 Blocking buffer: 3% nonfat dry milk in TBST.
 Detection: ECL Basic Kit
 Exposure time: 1s.



Immunofluorescence analysis of 293T and 293T-GFP cells using Rabbit anti GFP-Tag pAb (STJ11103701) at dilution of 1:50 (40x lens).
 Secondary antibody: Cy3-conjugated Goat anti-Rabbit IgG (H+L) (STJS001166) at 1:500 dilution.
 Blue: DAPI for nuclear staining.