

## Anti-GAPDH antibody (1-335) [S3MM] (STJ11103693)

### GENERAL INFORMATION

Product Type	Primary antibodies
Applications	WB/IHC-P/IF/ICC/ELISA
Host / Source	Mouse
Reactivity	Human/Mouse/Rat

### PRODUCT PROPERTIES

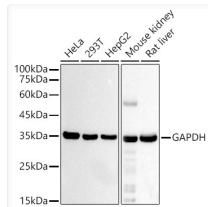
Clonality	Monoclonal
Concentration	Lot specific
Conjugation	Unconjugated
Purification	Affinity purification
Dilution Range	WB:1:100000-1:660000 IHC-P:1:100-1:500 IF/ICC:1:50-1:200 ELISA:Recommended starting concentration is 1 Mu g/mL. Please optimize the concentration based on your specific assay requirements.
Formulation	PBS with 0.09% Sodium Azide, 50% Glycerol, pH 7.3.
Isotype	IgG2bk
Molecular Weight	Protein Mw: 36kDa Observed Mw: 36kDa
Storage Instruction	Store at -20°C for up to 1 year from the date of receipt, and avoid repeat freeze-thaw cycles.

### TARGET INFORMATION

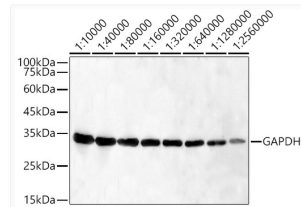
Gene ID	<a href="#">2597</a>
Gene Symbol	<a href="#">GAPDH</a>
UniProt ID	<a href="#">G3P_HUMAN</a>
Immunogen Region	1-335
Immunogen Sequence	MGKVKVGVNGFGRIGRLVTR AAFNSGKVDIVAINDFIDL NYMVYMFQYDSTHGKFGHTV KAENGLVINGNPITIFQER DPSKIKWGDAGAEYVVESTG VFTTMEKAGAHLQGGAKRVI ISAPSADAPMFVGMVNHKEY DNSLKIISNASCTTNCLAPL AKVIHDNFGIVEGLMTTVHA ITATQKTVDGSPGKLRWDGR GALQNIIPASTGAAKAVGKV IPELNGKLTGMAFRVPTAN
Specificity	Recombinant fusion protein containing a sequence corresponding to amino acids 1-335 of human GAPDH (P04406).

### ADDITIONAL INFORMATION

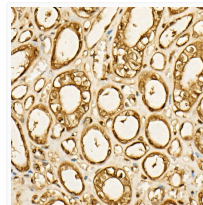
Note STRICTLY FOR FURTHER SCIENTIFIC RESEARCH USE ONLY (RUO). MUST NOT TO BE USED IN DIAGNOSTIC OR THERAPEUTIC APPLICATIONS.



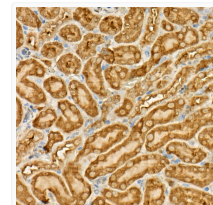
Western blot analysis of various lysates, using GAPDH Mouse mAb (High Dilution) (STJ11103693) at 1:640000 dilution. Secondary antibody: HRP-conjugated Goat anti-Mouse IgG (H+L) (STJS000854) at 1:10000 dilution. Lysates/proteins: 25 Mu g per lane. Blocking buffer: 3% nonfat dry milk in TBST. Detection: ECL Basic Kit Exposure time: 30s.



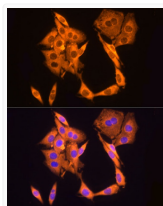
Western blot analysis of lysates from HeLa cells, using GAPDH Mouse mAb (High Dilution) (STJ11103693) at 1:10000-1:2560000 different dilution. Secondary antibody: HRP-conjugated Goat anti-Mouse IgG (H+L) (STJS000854) at 1:10000 dilution. Lysates/proteins: 25 Mu g per lane. Blocking buffer: 3% nonfat dry milk in TBST. Detection: ECL Basic Kit Exposure time: 20s.



Immunohistochemistry analysis of paraffin-embedded Human kidney using GAPDH Mouse mAb (High Dilution) (STJ11103693) at dilution of 1:500 (40x lens). High pressure antigen retrieval performed with 0. 01M Citrate Bufferr (pH 6. 0) prior to immunohistochemistry staining.



Immunohistochemistry analysis of paraffin-embedded Mouse kidney using GAPDH Mouse mAb (High Dilution) (STJ11103693) at dilution of 1:500 (40x lens). High pressure antigen retrieval performed with 0. 01M Citrate Bufferr (pH 6. 0) prior to immunohistochemistry staining.



Immunofluorescence analysis of PC-12 cells using GAPDH Mouse mAb (High Dilution) (STJ11103693) at dilution of 1:100 (40x lens). Blue: DAPI for nuclear staining.