

Anti-Alpha-tubulin antibody (1-80) (STJ11103690)

GENERAL INFORMATION

Product Type	Primary antibodies
Applications	WB/IF/ICC
Host / Source	Rabbit
Reactivity	Human/Mouse/Rat

PRODUCT PROPERTIES

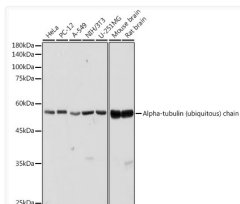
Clonality	Polyclonal
Concentration	Lot specific
Conjugation	Unconjugated
Purification	Affinity purification
Dilution Range	WB:1:500-1:1000 IF/ICC:1:50-1:200
Formulation	PBS with 0.01% Thimerosal, 50% Glycerol, pH 7.3.
Isotype	IgG
Molecular Weight	Protein Mw: 50kDa Observed Mw: 50kDa
Storage Instruction	Store at -20°C for up to 1 year from the date of receipt, and avoid repeat freeze-thaw cycles.

TARGET INFORMATION

Gene ID	10376
Gene Symbol	TUBA1B
UniProt ID	TBA1B_HUMAN
Immunogen Region	1-80
Immunogen Sequence	MRECISIHVGQAGVQIGNAC WELCYCLEHGIQPDGQMPSDK TIGGGDDSFNTFFSETGAGK HVPRAVFDLEPTVIDEVRT
Specificity	Recombinant fusion protein containing a sequence within amino acids 1-80 of human Alpha-tubulin (ubiquitous chain (NP_006073.2)).

ADDITIONAL INFORMATION

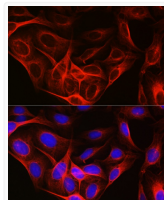
Note STRICTLY FOR FURTHER SCIENTIFIC RESEARCH USE ONLY (RUO). MUST NOT TO BE USED IN DIAGNOSTIC OR THERAPEUTIC APPLICATIONS.



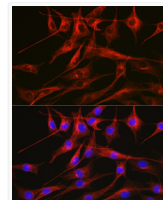
Western blot analysis of various lysates using Alpha-tubulin (ubiquitous) chain Rabbit pAb (STJ11103690) at 1:1000 dilution.

Secondary antibody: HRP-conjugated Goat anti-Rabbit IgG (H+L) (STJS000856) at 1:10000 dilution.

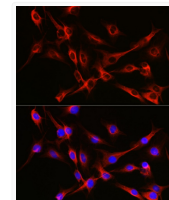
Lysates/proteins: 25 µg per lane.
Blocking buffer: 3% nonfat dry milk in TBST.
Detection: ECL Basic Kit
Exposure time: 1s.



Immunofluorescence analysis of U2OS cells using Alpha-tubulin (ubiquitous) chain Rabbit pAb (STJ11103690) at dilution of 1:100. Secondary antibody: Cy3-conjugated Goat anti-Rabbit IgG (H+L) (STJS001166) at 1:500 dilution. Blue: DAPI for nuclear staining.



Immunofluorescence analysis of NIH/3T3 cells using Alpha-tubulin (ubiquitous) chain Rabbit pAb (STJ11103690) at dilution of 1:100. Secondary antibody: Cy3-conjugated Goat anti-Rabbit IgG (H+L) (STJS001166) at 1:500 dilution. Blue: DAPI for nuclear staining.



Immunofluorescence analysis of C6 cells using Alpha-tubulin (ubiquitous) chain Rabbit pAb (STJ11103690) at dilution of 1:100. Secondary antibody: Cy3-conjugated Goat anti-Rabbit IgG (H+L) (STJS001166) at 1:500 dilution. Blue: DAPI for nuclear staining.