

Anti-Alpha-Tubulin antibody (1-180) (STJ11103685)

GENERAL INFORMATION

Product Type	Primary antibodies
Applications	WB/IF/ICC
Host / Source	Rabbit
Reactivity	Human/Mouse/Rat

PRODUCT PROPERTIES

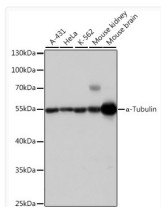
Clonality	Polyclonal
Concentration	Lot specific
Conjugation	Unconjugated
Purification	Affinity purification
Dilution Range	WB:1:500-1:1000 IF/CC:1:50-1:200
Formulation	PBS with 0.05% Proclin300, 50% Glycerol, pH 7.3.
Isotype	IgG
Molecular Weight	Protein Mw: 50kDa Observed Mw: 55kDa
Storage Instruction	Store at -20°C for up to 1 year from the date of receipt, and avoid repeat freeze-thaw cycles.

TARGET INFORMATION

Gene ID	7277
Gene Symbol	TUBA4A
UniProt ID	TBA4A_HUMAN
Immunogen Region	1-180
Immunogen Sequence	MRECISVHVGQAGVQMGNAC WELYCLEHGIQPDGQMPSDK TIGGGDDSFITFFCETGAGK HVPRAVFDLEPTVIDEIRN GPYRQLFHPEQLITGKEDAA NNYARGHYTIGKEIDPVLD RIRKLSQDQCTGLQGFLVFHS FGGGTGSGFTSLLMERLSVD YGKKSLEFSIYPAPQVSTA
Specificity	Recombinant fusion protein containing a sequence corresponding to amino acids 1-180 of human Alpha-Tubulin (NP_005991.1).

ADDITIONAL INFORMATION

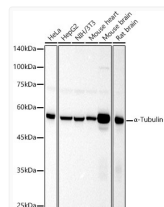
Note STRICTLY FOR FURTHER SCIENTIFIC RESEARCH USE ONLY (RUO). MUST NOT TO BE USED IN DIAGNOSTIC OR THERAPEUTIC APPLICATIONS.



Western blot analysis of various lysates using Alpha-Tubulin Rabbit pAb (STJ11103685) at 1:1000 dilution.

Secondary antibody: HRP-conjugated Goat anti-Rabbit IgG (H+L) (STJS000856) at 1:10000 dilution.

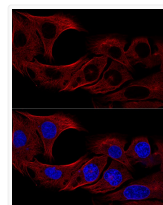
Lysates/proteins: 25 Mu g per lane.
Blocking buffer: 3% nonfat dry milk in TBST.
Detection: ECL Basic Kit
Exposure time: 1s.



Western blot analysis of various lysates, using Alpha-Tubulin Rabbit pAb (STJ11103685) at 1:1000 dilution.

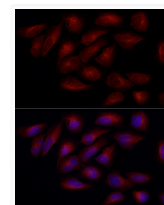
Secondary antibody: HRP-conjugated Goat anti-Rabbit IgG (H+L) (STJS000856) at 1:10000 dilution.

Lysates/proteins: 25 Mu g per lane.
Blocking buffer: 3% nonfat dry milk in TBST.
Detection: ECL Basic Kit
Exposure time: 30s.



Confocal immunofluorescence analysis of U2OS cells using Alpha-Tubulin Rabbit pAb (STJ11103685) at dilution of 1:100 (60x lens).

Blue: DAPI for nuclear staining.



Immunofluorescence analysis of U2OS cells using Alpha-Tubulin Rabbit pAb (STJ11103685) at dilution of 1:100 (40x lens). Secondary antibody: Cy3-conjugated Goat anti-Rabbit IgG (H+L) (STJS001166) at 1:500 dilution. Blue: DAPI for nuclear staining.