

Anti-Beta-Actin antibody [S3MR] (STJ11103683)

GENERAL INFORMATION

Product Type	Primary antibodies
Applications	WB/IHC-P/IF/ICC/ELISA
Host / Source	Mouse
Reactivity	Human/Mouse/Rat

PRODUCT PROPERTIES

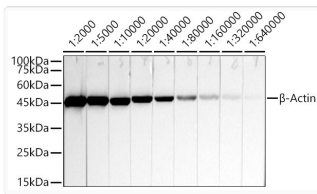
Clonality	Monoclonal
Concentration	Lot specific
Conjugation	Unconjugated
Purification	Affinity purification
Dilution Range	WB:1:5000-1:160000 IHC-P:1:50-1:200 IF/CC:1:50-1:200 ELISA:Recommended starting concentration is 1 µg/mL. Please optimize the concentration based on your specific assay requirements.
Formulation	PBS with 0.05% Proclin300, 50% Glycerol, pH 7.3.
Isotype	IgG1k
Molecular Weight	Protein Mw: 42kDa Observed Mw: 42kDa
Storage Instruction	Store at -20°C for up to 1 year from the date of receipt, and avoid repeat freeze-thaw cycles.

TARGET INFORMATION

Gene ID	60
Gene Symbol	ACTB
UniProt ID	ACTB_HUMAN
Specificity	Fusion protein of human Beta-Actin

ADDITIONAL INFORMATION

Note	STRICTLY FOR FURTHER SCIENTIFIC RESEARCH USE ONLY (RUO). MUST NOT TO BE USED IN DIAGNOSTIC OR THERAPEUTIC APPLICATIONS.
------	---



Western blot analysis of lysates from HeLa cells, using Beta-Actin Mouse mAb (STJ11103683) at 1:2000-1:640000 dilution.

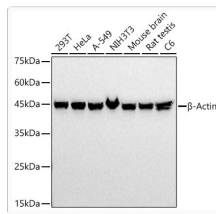
Secondary antibody: HRP-conjugated Goat anti-Mouse IgG (H+L) (STJS000854) at 1:10000 dilution.

Lysates/proteins: 25 Mu g per lane.

Blocking buffer: 3% nonfat dry milk in TBST.

Detection: ECL Basic Kit

Exposure time: 10s.



Western blot analysis of various lysates, using Beta-Actin Mouse mAb (STJ11103683) at 1:20000 dilution.

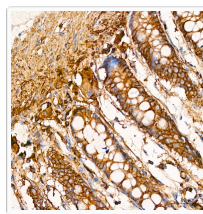
Secondary antibody: HRP-conjugated Goat anti-Mouse IgG (H+L) (STJS000854) at 1:10000 dilution.

Lysates/proteins: 25 Mu g per lane.

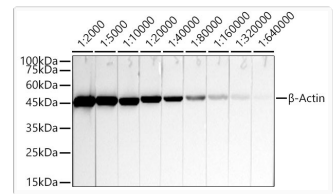
Blocking buffer: 3% nonfat dry milk in TBST.

Detection: ECL Basic Kit

Exposure time: 1s.



Immunohistochemistry analysis of paraffin-embedded Human colon tissue using Beta-Actin Mouse mAb (STJ11103683) at a dilution of 1:200 (40x lens). High pressure antigen retrieval performed with 0.01M Citrate Buffer (pH 6.0) prior to immunohistochemistry staining.



Western blot analysis of lysates from HeLa cells, using beta-Actin Mouse mAb (STJ11103683) at 1:2000-1:640000 dilution.

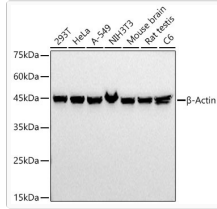
Secondary antibody: HRP-conjugated Goat anti-Mouse IgG (H+L) (STJS000854) at 1:10000 dilution.

Lysates/proteins: 25 Mu g per lane.

Blocking buffer: 3% nonfat dry milk in TBST.

Detection: ECL Basic Kit

Exposure time: 10s.



Western blot analysis of various lysates, using beta-Actin Mouse mAb (STJ11103683) at 1:20000 dilution.

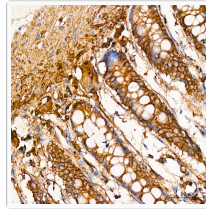
Secondary antibody: HRP-conjugated Goat anti-Mouse IgG (H+L) (STJS000854) at 1:10000 dilution.

Lysates/proteins: 25 Mu g per lane.

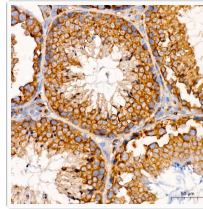
Blocking buffer: 3% nonfat dry milk in TBST.

Detection: ECL Basic Kit

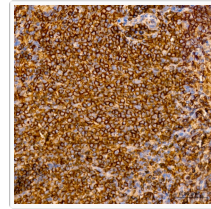
Exposure time: 1s.



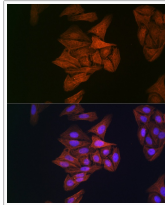
Immunohistochemistry analysis of paraffin-embedded Human colon tissue using beta-Actin Mouse mAb (STJ11103683) at a dilution of 1:200 (40x lens). High pressure antigen retrieval performed with 0.01M Citrate Buffer (pH 6.0) prior to immunohistochemistry staining.



Immunohistochemistry analysis of paraffin-embedded Mouse testis tissue using beta-Actin Mouse mAb (STJ11103683) at a dilution of 1:200 (40x lens). High pressure antigen retrieval performed with 0.01M Citrate Buffer (pH 6.0) prior to immunohistochemistry staining.



Immunohistochemistry analysis of paraffin-embedded Rat spleen tissue using beta-Actin Mouse mAb (STJ11103683) at a dilution of 1:200 (40x lens). High pressure antigen retrieval performed with 0.01M Citrate Buffer (pH 6.0) prior to immunohistochemistry staining.



Immunofluorescence analysis of U2OS cells using beta-Actin Mouse mAb (STJ11103683) at dilution of 1:100 (40x lens). Blue: DAPI for nuclear staining.