

Anti-RPB3/POLR2C antibody (1-100) [S8MR] (STJ11103678)

GENERAL INFORMATION

Product Type	Primary antibodies
Applications	WB/IHC-P/ELISA
Host / Source	Rabbit
Reactivity	Human/Mouse/Rat

PRODUCT PROPERTIES

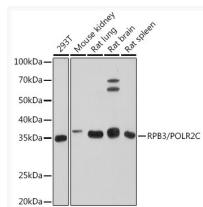
Clonality	Monoclonal
Concentration	Lot specific
Conjugation	Unconjugated
Purification	Affinity purification
Dilution Range	WB:1:100-1:500 IHC-P:1:50-1:200 ELISA:Recommended starting concentration is 1 µg/mL. Please optimize the concentration based on your specific assay requirements.
Formulation	PBS with 0.02% Sodium Azide, 0.05% BSA, 50% Glycerol, pH 7.3.
Isotype	IgG
Molecular Weight	Protein Mw: 31kDa Observed Mw: 35kDa
Storage Instruction	Store at -20°C for up to 1 year from the date of receipt, and avoid repeat freeze-thaw cycles.

TARGET INFORMATION

Gene ID	5432
Gene Symbol	POLR2C
UniProt ID	RPB3_HUMAN
Immunogen Region	1-100
Immunogen Sequence	MPYANQPTVRITELTDENVK FIIENTDLAVANSIRRVFIA EVPIIAIDWVQIDANSSVLH DEFIAHRLGLIPLISDDIVD KLQYSRDCCTCEEFCEPCSVE
Specificity	A synthetic peptide corresponding to a sequence within amino acids 1-100 of human RPB3/POLR2C (P19387).

ADDITIONAL INFORMATION

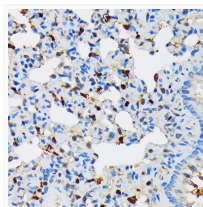
Note STRICTLY FOR FURTHER SCIENTIFIC RESEARCH USE ONLY (RUO). MUST NOT TO BE USED IN DIAGNOSTIC OR THERAPEUTIC APPLICATIONS.



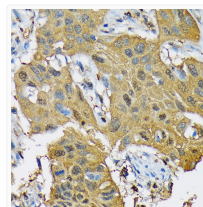
Western blot analysis of various lysates using RPB3/POLR2C Rabbit mAb (STJ11103678) at 1:500 dilution.

Secondary antibody: HRP-conjugated Goat anti-Rabbit IgG (H+L) (STJS000856) at 1:10000 dilution.

Lysates/proteins: 25 µg per lane.
Blocking buffer: 3% nonfat dry milk in TBST.
Detection: ECL Enhanced Kit
Exposure time: 180s.



Immunohistochemistry analysis of paraffin-embedded Rat lung using RPB3/POLR2C Rabbit mAb (STJ11103678) at dilution of 1:100 (40x lens). Microwave antigen retrieval performed with 0.01M Tris/EDTA Buffer (pH 9.0) prior to immunohistochemistry staining.



Immunohistochemistry analysis of paraffin-embedded Human lung cancer using RPB3/POLR2C Rabbit mAb (STJ11103678) at dilution of 1:100 (40x lens). Microwave antigen retrieval performed with 0.01M Tris/EDTA Buffer (pH 9.0) prior to immunohistochemistry staining.