

Anti-Lin28 antibody (1-100) [S0MR] (STJ11103670)

GENERAL INFORMATION

Product Type	Primary antibodies
Applications	IF/ICC/ELISA
Host / Source	Rabbit
Reactivity	Human/Mouse/Rat

PRODUCT PROPERTIES

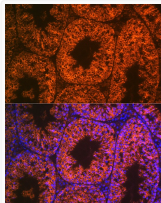
Clonality	Monoclonal
Concentration	Lot specific
Conjugation	Unconjugated
Purification	Affinity purification
Dilution Range	IF/ICC:1:50-1:200 ELISA:Recommended starting concentration is 1 Mu g/mL. Please optimize the concentration based on your specific assay requirements.
Formulation	PBS with 0.02% Sodium Azide, 0.05% BSA, 50% Glycerol, pH 7.3.
Isotype	IgG
Molecular Weight	Protein Mw: 23kDa Observed Mw: 26kDa
Storage Instruction	Store at -20°C for up to 1 year from the date of receipt, and avoid repeat freeze-thaw cycles.

TARGET INFORMATION

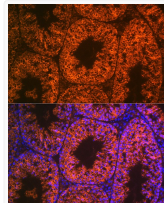
Gene ID	79727
Gene Symbol	LIN28A
UniProt ID	LN28A_HUMAN
Immunogen Region	1-100
Immunogen Sequence	MGSVSNQQFAGGCAKAAEEA PEEAPEDAARRADEPQLLHG AGICKWFNVRMGFGFLSMTA RAGVALDPPVDVVFVHQSKLH MEGFRSLKEGEAVEFTFKKS
Specificity	A synthetic peptide corresponding to a sequence within amino acids 1-100 of human LIN28A (Q9H9Z2).

ADDITIONAL INFORMATION

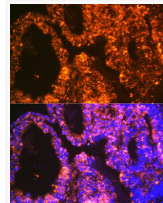
Note STRICTLY FOR FURTHER SCIENTIFIC RESEARCH USE ONLY (RUO). MUST NOT TO BE USED IN DIAGNOSTIC OR THERAPEUTIC APPLICATIONS.



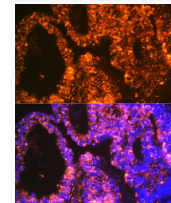
Western blot analysis of extracts of various cell lines, using Lin28 antibody (STJ11103670) at 1:500 dilution. Secondary antibody: HRP Goat Anti-rabbit IgG (H+L) at 1:10000 dilution. Lysates/proteins: 25ug per lane. Blocking buffer: 3% non-fat dry milk in TBST. Detection: ECL Basic Kit. Exposure time: 180s.



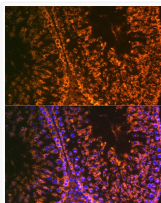
Immunofluorescence analysis of mouse testis using LIN28A Rabbit monoclonal antibody (STJ11103670) at dilution of 1:100 (40x lens). Blue: DAPI for nuclear staining.



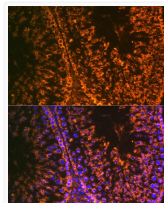
Immunofluorescence analysis of rat testis using Lin28 rabbit monoclonal antibody (STJ11103670) at dilution of 1:100 (40x lens). Blue: DAPI for nuclear staining.



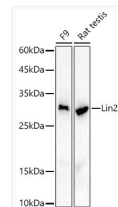
Immunofluorescence analysis of human ovary using LIN28A Rabbit monoclonal antibody (STJ11103670) at dilution of 1:100 (40x lens). Blue: DAPI for nuclear staining.



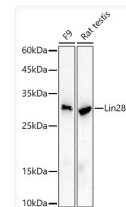
Immunofluorescence analysis of human ovary using Lin28 rabbit monoclonal antibody (STJ11103670) at dilution of 1:100 (40x lens). Blue: DAPI for nuclear staining.



Immunofluorescence analysis of rat testis using LIN28A Rabbit monoclonal antibody (STJ11103670) at dilution of 1:100 (40x lens). Blue: DAPI for nuclear staining.



Immunofluorescence analysis of mouse testis using Lin28 rabbit monoclonal antibody (STJ11103670) at dilution of 1:100 (40x lens). Blue: DAPI for nuclear staining.



Western blot analysis of various lysates, using Lin28 antibody (STJ11103670) at 1:20000 dilution. Secondary antibody: HRP Goat Anti-Rabbit IgG (H+L) (STJS000856) at 1:10000 dilution. Lysates/proteins: 25 Mu g per lane. Blocking buffer: 3% nonfat dry milk in TBST. Detection: ECL Basic Kit. Exposure time: 90s.