

Anti-TorsinA/TOR1A antibody (233-332) [S7MR] (STJ11103667)

GENERAL INFORMATION

Product Type	Primary antibodies
Applications	WB/ELISA
Host / Source	Rabbit
Reactivity	Human/Mouse/Rat

PRODUCT PROPERTIES

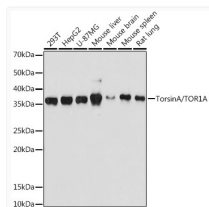
Clonality	Monoclonal
Concentration	Lot specific
Conjugation	Unconjugated
Purification	Affinity purification
Dilution Range	WB:1:100-1:500 ELISA:Recommended starting concentration is 1 Mu g/mL. Please optimize the concentration based on your specific assay requirements.
Formulation	PBS with 0.02% Sodium Azide, 0.05% BSA, 50% Glycerol, pH 7.3.
Isotype	IgG
Molecular Weight	Protein Mw: 38kDa Observed Mw: 38kDa
Storage Instruction	Store at -20°C for up to 1 year from the date of receipt, and avoid repeat freeze-thaw cycles.

TARGET INFORMATION

Gene ID	1861
Gene Symbol	TOR1A
UniProt ID	TOR1A_HUMAN
Immunogen Region	233-332
Immunogen Sequence	LKDIEHALSVSVFNKNSGF WHSSLIDRNLIDYFVPLPL EYKHLKMCIRVEMQSRGYEI DEDIVSRVAEEMTFPPKEER VFSDKGCKTVFTKLDYYDD
Specificity	A synthetic peptide corresponding to a sequence within amino acids 233-332 of human TorsinA/TOR1A (O14656).

ADDITIONAL INFORMATION

Note STRICTLY FOR FURTHER SCIENTIFIC RESEARCH USE ONLY (RUO). MUST NOT TO BE USED IN DIAGNOSTIC OR THERAPEUTIC APPLICATIONS.



Western blot analysis of various lysates using TorsinA/TOR1A Rabbit mAb (STJ11103667) at 1:500 dilution.

Secondary antibody: HRP-conjugated Goat anti-Rabbit IgG (H+L) (STJS000856) at 1:10000 dilution.

Lysates/proteins: 25 Mu g per lane.

Blocking buffer: 3% nonfat dry milk in TBST.

Detection: ECL Basic Kit

Exposure time: 180s.