

## Anti-MEPE antibody (90-256) (STJ11103665)

### GENERAL INFORMATION

Product Type	Primary antibodies
Applications	WB/ELISA
Host / Source	Rabbit
Reactivity	Human/Mouse/Rat

### PRODUCT PROPERTIES

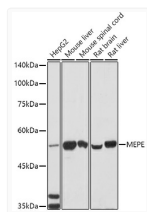
Clonality	Polyclonal
Concentration	Lot specific
Conjugation	Unconjugated
Purification	Affinity purification
Dilution Range	WB:1:500-1:1000 ELISA:Recommended starting concentration is 1 µg/mL. Please optimize the concentration based on your specific assay requirements.
Formulation	PBS with 0.01% Thimerosal, 50% Glycerol, pH 7.3.
Isotype	IgG
Molecular Weight	Protein Mw: 58kDa Observed Mw: 58kDa
Storage Instruction	Store at -20°C for up to 1 year from the date of receipt, and avoid repeat freeze-thaw cycles.

### TARGET INFORMATION

Gene ID	<a href="#">56955</a>
Gene Symbol	<a href="#">MEPE</a>
UniProt ID	<a href="#">MEPE_HUMAN</a>
Immunogen Region	90-256
Immunogen Sequence	FTNRQRLNKEYSISNKENTH NGLRMSIYPKSTGNKGFEDG DDAISKLHDQEEYGAALIRN NMQHIMGPVTAIKLLGEENK ENTPRNVLNIIIPASMNYAKA HSKDKKKPQRDSQAQKSPVK SKSTHRIQHNIDYLKHLKSKV KKIPSDFEFGSGYTDLQERGD NDISPFS
Specificity	Recombinant fusion protein containing a sequence corresponding to amino acids 90-256 of human MEPE (NP_064588.1).

### ADDITIONAL INFORMATION

Note STRICTLY FOR FURTHER SCIENTIFIC RESEARCH USE ONLY (RUO). MUST NOT TO BE USED IN DIAGNOSTIC OR THERAPEUTIC APPLICATIONS.



Western blot analysis of various lysates using MEPE Rabbit pAb (STJ11103665) at 1:1000 dilution.

Secondary antibody: HRP-conjugated Goat anti-Rabbit IgG (H+L) (STJS000856) at 1:10000 dilution.

Lysates/proteins: 25 µg per lane.  
Blocking buffer: 3% nonfat dry milk in TBST.  
Detection: ECL Basic Kit  
Exposure time: 90s.