

## Anti-MRP2/ABCC2 antibody (1446-1545) [S0MR] (STJ11103660)

### GENERAL INFORMATION

|               |                    |
|---------------|--------------------|
| Product Type  | Primary antibodies |
| Applications  | WB/ELISA           |
| Host / Source | Rabbit             |
| Reactivity    | Human              |

### PRODUCT PROPERTIES

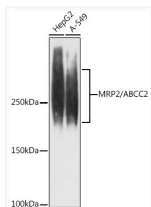
|                     |  |
|---------------------|--|
| Clonality           | Monoclonal   |
| Concentration       | Lot specific   |
| Conjugation         | Unconjugated   |
| Purification        | Affinity purification  |
| Dilution Range      | WB:1:500-1:1000<br>ELISA:Recommended starting concentration is 1 Mu g/mL. Please optimize the concentration based on your specific assay requirements. |
| Formulation         | PBS with 0.02% Sodium Azide, 0.05% BSA, 50% Glycerol, pH 7.3.  |
| Isotype             | IgG  |
| Molecular Weight    | Protein Mw: 174kDa<br>Observed Mw: 250kDa  |
| Storage Instruction | Store at -20°C for up to 1 year from the date of receipt, and avoid repeat freeze-thaw cycles.   |

### TARGET INFORMATION

|                    |  |
|--------------------|--|
| Gene ID            | <a href="#">1244</a>   |
| Gene Symbol        | <a href="#">ABCC2</a>  |
| UniProt ID         | <a href="#">MRP2_HUMAN</a>   |
| Immunogen Region   | 1446-1545  |
| Immunogen Sequence | CLGRALLRKSKILVLDEATA AVDLETDNLIQTTIQNEFAH CTVTIAHRLHTIMDSKVM<br>VLDNGKIIIECGSPEELLQIP GPFYFMAKEAGIENVNSTKF |
| Specificity        | A synthetic peptide corresponding to a sequence within amino acids 1446-1545 of human MRP2/ABCC2 (Q92887). |

### ADDITIONAL INFORMATION

Note STRICTLY FOR FURTHER SCIENTIFIC RESEARCH USE ONLY (RUO). MUST NOT TO BE USED IN DIAGNOSTIC OR THERAPEUTIC APPLICATIONS.



Western blot analysis of various lysates using MRP2/ABCC2 Rabbit mAb (STJ11103660) at 1:1000 dilution.

Secondary antibody: HRP-conjugated Goat anti-Rabbit IgG (H+L) (STJS000856) at 1:10000 dilution.

Lysates/proteins: 25 Mu g per lane.

Blocking buffer: 3% nonfat dry milk in TBST.

Detection: ECL Enhanced Kit

Exposure time: 180s.