

Anti-CAMKIV antibody (374-473) [S5MR] (STJ11103655)

GENERAL INFORMATION

Product Type	Primary antibodies
Applications	WB/IHC-P/IF/ICC/ELISA
Host / Source	Rabbit
Reactivity	Human/Mouse/Rat

PRODUCT PROPERTIES

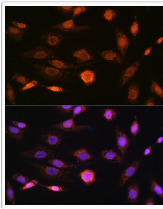
Clonality	Monoclonal
Concentration	Lot specific
Conjugation	Unconjugated
Purification	Affinity purification
Dilution Range	WB:1:500-1:1000 IHC-P:1:500-1:1000 IF/CC:1:50-1:200 ELISA:Recommended starting concentration is 1 µg/mL. Please optimize the concentration based on your specific assay requirements.
Formulation	PBS with 0.02% Sodium Azide, 0.05% BSA, 50% Glycerol, pH 7.3.
Isotype	IgG
Molecular Weight	Protein Mw: 52kDa Observed Mw: 60kDa
Storage Instruction	Store at -20°C for up to 1 year from the date of receipt, and avoid repeat freeze-thaw cycles.

TARGET INFORMATION

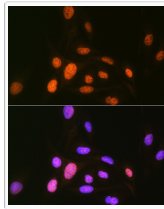
Gene ID	814
Gene Symbol	CAMK4
UniProt ID	KCC4_HUMAN
Immunogen Region	374-473
Immunogen Sequence	EGEKIQGDGAQAQAAVKGAQAE LMKVQALEKVKGADINAEAA PKMVPKAVEDGIKVADLELE EGLAEKLTVEEAAAPREG QGSSAVGFEVPPQQDVILPEY
Specificity	A synthetic peptide corresponding to a sequence within amino acids 374-473 of human CAMKIV (Q16566).

ADDITIONAL INFORMATION

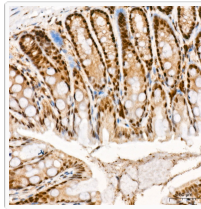
Note	STRICTLY FOR FURTHER SCIENTIFIC RESEARCH USE ONLY (RUO). MUST NOT TO BE USED IN DIAGNOSTIC OR THERAPEUTIC APPLICATIONS.
------	---



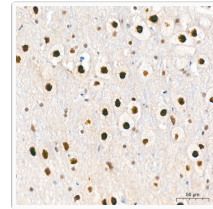
Western blot analysis of various lysates using CAMKIV Rabbit mAb (STJ11103655) at 1:1000 dilution. Secondary antibody: HRP-conjugated Goat anti-Rabbit IgG (H+L) (STJS000856) at 1:10000 dilution. Lysates/proteins: 25 Mu g per lane. Blocking buffer: 3% nonfat dry milk in TBST. Detection: ECL Basic Kit. Exposure time: 30s.



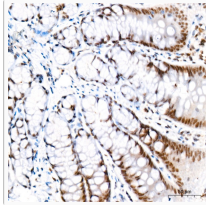
Immunohistochemistry analysis of paraffin-embedded Rat testis tissue using CAMKIV Rabbit mAb (STJ11103655) at a dilution of 1:800 (40x lens). High pressure antigen retrieval was performed with 0.01 M citrate buffer (pH 6.0) prior to immunohistochemistry staining.



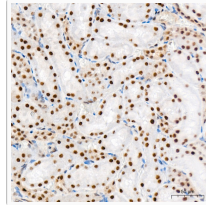
Immunohistochemistry analysis of paraffin-embedded Rat kidney tissue using CAMKIV Rabbit mAb (STJ11103655) at a dilution of 1:800 (40x lens). High pressure antigen retrieval was performed with 0.01 M citrate buffer (pH 6.0) prior to immunohistochemistry staining.



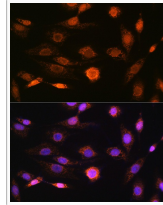
Immunohistochemistry analysis of paraffin-embedded Mouse brain tissue using CAMKIV Rabbit mAb (STJ11103655) at a dilution of 1:800 (40x lens). High pressure antigen retrieval was performed with 0.01 M citrate buffer (pH 6.0) prior to immunohistochemistry staining.



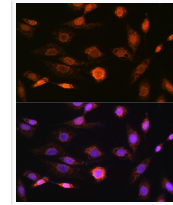
Immunohistochemistry analysis of paraffin-embedded Rat colon tissue using CAMKIV Rabbit mAb (STJ11103655) at a dilution of 1:800 (40x lens). High pressure antigen retrieval was performed with 0.01 M citrate buffer (pH 6.0) prior to immunohistochemistry staining.



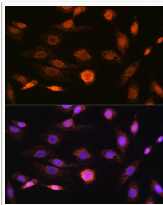
Immunohistochemistry analysis of paraffin-embedded Rat brain tissue using CAMKIV Rabbit mAb (STJ11103655) at a dilution of 1:800 (40x lens). High pressure antigen retrieval was performed with 0.01 M citrate buffer (pH 6.0) prior to immunohistochemistry staining.



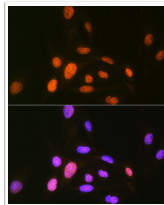
Western blot analysis of various lysates using CAMKIV Rabbit mAb (STJ11103655) at 1:1000 dilution. Secondary antibody: HRP Goat Anti-Rabbit IgG (H+L) (STJS000856) at 1:10000 dilution. Lysates/proteins: 25 Mu g per lane. Blocking buffer: 3% nonfat dry milk in TBST. Detection: ECL Basic Kit. Exposure time: 30s.



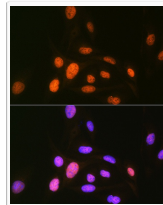
Immunohistochemistry analysis of CAMKIV in paraffin-embedded human breast cancer tissue using CAMKIV Rabbit mAb (STJ11103655) at a dilution of 1:800 (40x lens). High pressure antigen retrieval was performed with 0.01 M citrate buffer (pH 6.0) prior to immunohistochemistry staining.



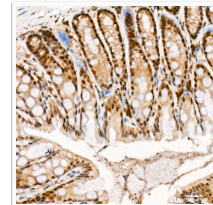
Immunofluorescence analysis of NIH-3T3 cells using CAMKIV Rabbit mAb (STJ11103655) at dilution of 1:100 (40x lens). Secondary antibody: Cy3 Goat Anti-Rabbit IgG (H+L) (STJS001166) at 1:500 dilution. Blue: DAPI for nuclear staining.



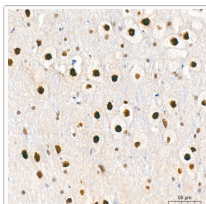
Immunohistochemistry analysis of CAMKIV in paraffin-embedded mouse brain tissue using CAMKIV Rabbit mAb (STJ11103655) at a dilution of 1:800 (40x lens). High pressure antigen retrieval was performed with 0.01 M citrate buffer (pH 6.0) prior to immunohistochemistry staining.



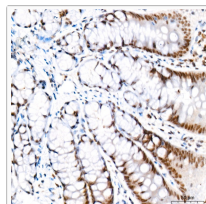
Immunofluorescence analysis of U-2 OS cells using CAMKIV Rabbit mAb (STJ11103655) at dilution of 1:100 (40x lens). Secondary antibody: Cy3 Goat Anti-Rabbit IgG (H+L) (STJS001166) at 1:500 dilution. Blue: DAPI for nuclear staining.



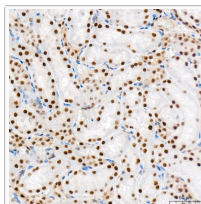
Immunohistochemistry analysis of CAMKIV in paraffin-embedded mouse colon tissue using CAMKIV Rabbit mAb (STJ11103655) at a dilution of 1:800 (40x lens). High pressure antigen retrieval was performed with 0.01 M citrate buffer (pH 6.0) prior to immunohistochemistry staining.



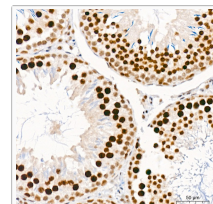
Immunohistochemistry analysis of CAMKIV in paraffin-embedded rat brain tissue using CAMKIV Rabbit mAb (STJ11103655) at a dilution of 1:800 (40x lens). High pressure antigen retrieval was performed with 0.01 M citrate buffer (pH 6.0) prior to immunohistochemistry staining.



Immunohistochemistry analysis of CAMKIV in paraffin-embedded rat colon tissue using CAMKIV Rabbit mAb (STJ11103655) at a dilution of 1:800 (40x lens). High pressure antigen retrieval was performed with 0.01 M citrate buffer (pH 6.0) prior to immunohistochemistry staining.



Immunohistochemistry analysis of CAMKIV in paraffin-embedded rat kidney tissue using CAMKIV Rabbit mAb (STJ11103655) at a dilution of 1:800 (40x lens). High pressure antigen retrieval was performed with 0.01 M citrate buffer (pH 6.0) prior to immunohistochemistry staining.



Immunohistochemistry analysis of CAMKIV in paraffin-embedded rat testis tissue using CAMKIV Rabbit mAb (STJ11103655) at a dilution of 1:800 (40x lens). High pressure antigen retrieval was performed with 0.01 M citrate buffer (pH 6.0) prior to immunohistochemistry staining.