

Anti-LEO1 antibody (340-570) (STJ11103634)

GENERAL INFORMATION

| | |
|---------------|-----------------------|
| Product Type | Primary antibodies |
| Applications | WB/IHC-P/IF/ICC/ELISA |
| Host / Source | Rabbit |
| Reactivity | Human/Mouse/Rat |

PRODUCT PROPERTIES

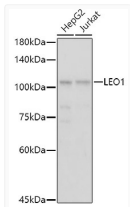
| | |
|---------------------|--|
| Clonality | Polyclonal |
| Concentration | Lot specific |
| Conjugation | Unconjugated |
| Purification | Affinity purification |
| Dilution Range | WB:1:500-1:1000 IHC-P:1:50-1:200 IF/CC:1:50-1:200 ELISA:Recommended starting concentration is 1 µg/mL. Please optimize the concentration based on your specific assay requirements. |
| Formulation | PBS with 0.01% Thimerosal, 50% Glycerol, pH 7.3. |
| Isotype | IgG |
| Molecular Weight | Protein Mw: 75kDa Observed Mw: 105kDa |
| Storage Instruction | Store at -20°C for up to 1 year from the date of receipt, and avoid repeat freeze-thaw cycles. |

TARGET INFORMATION

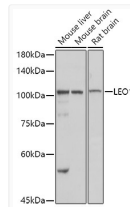
| | |
|--------------------|--|
| Gene ID | 123169 |
| Gene Symbol | LEO1 |
| UniProt ID | LEO1_HUMAN |
| Immunogen Region | 340-570 |
| Immunogen Sequence | ENGLPQDQQEEPIPETRIE VEIPKVNTDLGNDLYFVKLP NFLSVEPRPFPDPQYYEDEFE DEEMLDEEGRTRLKLVKVENT IRWRIIRRDEEGNEIKESNAR IVKWSDDGSMHLGNEVFDV YKAPLQGDHNLHFIRQGTGL QGQAVFKTKLTFRPHSTDSA THRKMTLSLADRCSTQKIR ILPMAGRDPEQCQRTEMIKKE EERLRASIRRESQQRMRREK QHQRGLSASYL |
| Specificity | Recombinant fusion protein containing a sequence corresponding to amino acids 340-570 of human LEO1 (NP_620147.1). |

ADDITIONAL INFORMATION

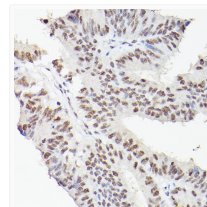
Note STRICTLY FOR FURTHER SCIENTIFIC RESEARCH USE ONLY (RUO). MUST NOT TO BE USED IN DIAGNOSTIC OR THERAPEUTIC APPLICATIONS.



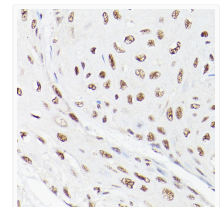
Western blot analysis of various lysates using LEO1 Rabbit pAb (STJ11103634) at 1:1000 dilution.
Secondary antibody: HRP-conjugated Goat anti-Rabbit IgG (H+L) (STJS000856) at 1:10000 dilution.
Lysates/proteins: 25 µg per lane.
Blocking buffer: 3% nonfat dry milk in TBST.
Detection: ECL Basic Kit
Exposure time: 1s.



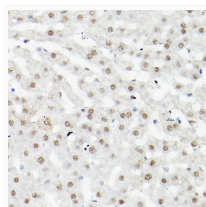
Western blot analysis of various lysates using LEO1 Rabbit pAb (STJ11103634) at 1:1000 dilution.
Secondary antibody: HRP-conjugated Goat anti-Rabbit IgG (H+L) (STJS000856) at 1:10000 dilution.
Lysates/proteins: 25 µg per lane.
Blocking buffer: 3% nonfat dry milk in TBST.
Detection: ECL Basic Kit
Exposure time: 1s.



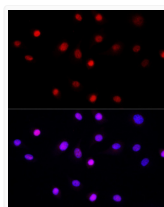
Immunohistochemistry analysis of paraffin-embedded Human colon carcinoma using LEO1 Rabbit pAb (STJ11103634) at dilution of 1:100 (40x lens). High pressure antigen retrieval performed with 0.01M Citrate Buffer (pH 6.0) prior to immunohistochemistry staining.



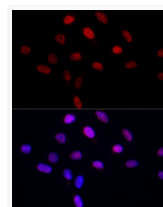
Immunohistochemistry analysis of paraffin-embedded Human esophageal cancer using LEO1 Rabbit pAb (STJ11103634) at dilution of 1:100 (40x lens). High pressure antigen retrieval performed with 0.01M Citrate Buffer (pH 6.0) prior to immunohistochemistry staining.



Immunohistochemistry analysis of paraffin-embedded Mouse liver using LEO1 Rabbit pAb (STJ11103634) at dilution of 1:100 (40x lens). High pressure antigen retrieval performed with 0.01M Citrate Buffer (pH 6.0) prior to immunohistochemistry staining.



Immunofluorescence analysis of NIH/3T3 cells using LEO1 Rabbit pAb (STJ11103634) at dilution of 1:50 (40x lens). Secondary antibody: Cy3-conjugated Goat anti-Rabbit IgG (H+L) (STJS001166) at 1:500 dilution. Blue: DAPI for nuclear staining.



Immunofluorescence analysis of U2OS cells using LEO1 Rabbit pAb (STJ11103634) at dilution of 1:50 (40x lens). Secondary antibody: Cy3-conjugated Goat anti-Rabbit IgG (H+L) (STJS001166) at 1:500 dilution. Blue: DAPI for nuclear staining.