

Anti-IKZF3 antibody (400-509) [S6MR] (STJ11103626)

GENERAL INFORMATION

Product Type	Primary antibodies
Applications	WB/IHC-P/IF/ICC/IP/ELISA
Host / Source	Rabbit
Reactivity	Human/Mouse/Rat

PRODUCT PROPERTIES

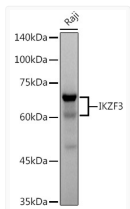
Clonality	Monoclonal
Concentration	Lot specific
Conjugation	Unconjugated
Purification	Affinity purification
Dilution Range	WB:1:500-1:1000 IHC-P:1:200-1:800 IF/ICC:1:50-1:200 IP:0.5 Mu g-4 Mu g antibody for 200 Mu g-400 Mu g extracts of whole cells ELISA:Recommended starting concentration is 1 Mu g/mL. Please optimize the concentration based on your speci
Formulation	PBS with 0.02% Sodium Azide, 0.05% BSA, 50% Glycerol, pH 7.3.
Isotype	IgG
Molecular Weight	Protein Mw: 58kDa Observed Mw: 65kDa
Storage Instruction	Store at -20°C for up to 1 year from the date of receipt, and avoid repeat freeze-thaw cycles.

TARGET INFORMATION

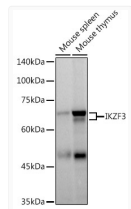
Gene ID	22806
Gene Symbol	IKZF3
UniProt ID	IKZF3_HUMAN
Immunogen Region	400-509
Immunogen Sequence	IYQQNHMVLRSRANGMPLLK EVPRSYELLKPPPICRDSV KVINKEGEVMDVYRCDHCRV LFLDYVMFTIHMGCCHFRDP FECNMCGYRSHDRYEFSSHI ARGEHRALLK
Specificity	Recombinant fusion protein containing a sequence corresponding to amino acids 400-509 of human IKZF3 (Q9UKT9).

ADDITIONAL INFORMATION

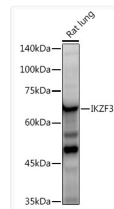
Note STRICTLY FOR FURTHER SCIENTIFIC RESEARCH USE ONLY (RUO). MUST NOT TO BE USED IN DIAGNOSTIC OR THERAPEUTIC APPLICATIONS.



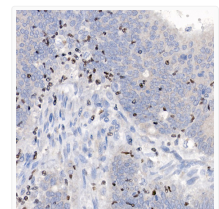
Western blot analysis of lysates from Raji cells, using IKZF3 Rabbit mAb (STJ11103626) at 1:500 dilution.
Secondary antibody: HRP-conjugated Goat anti-Rabbit IgG (H+L) (STJS000856) at 1:10000 dilution.
Lysates/proteins: 25 Mu g per lane.
Blocking buffer: 3% nonfat dry milk in TBST.
Detection: ECL Basic Kit
Exposure time: 3s.



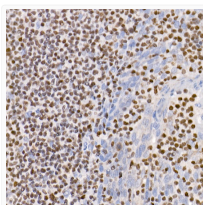
Western blot analysis of various lysates using IKZF3 Rabbit mAb (STJ11103626) at 1:500 dilution.
Secondary antibody: HRP-conjugated Goat anti-Rabbit IgG (H+L) (STJS000856) at 1:10000 dilution.
Lysates/proteins: 25 Mu g per lane.
Blocking buffer: 3% nonfat dry milk in TBST.
Detection: ECL Basic Kit
Exposure time: 60s.



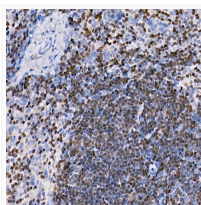
Western blot analysis of lysates from Rat lung, using IKZF3 Rabbit mAb (STJ11103626) at 1:500 dilution.
Secondary antibody: HRP-conjugated Goat anti-Rabbit IgG (H+L) (STJS000856) at 1:10000 dilution.
Lysates/proteins: 25 Mu g per lane.
Blocking buffer: 3% nonfat dry milk in TBST.
Detection: ECL Enhanced Kit
Exposure time: 90s.



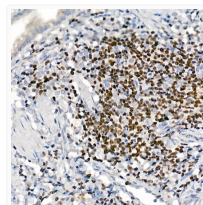
Immunohistochemistry analysis of paraffin-embedded Human spleen tissue using IKZF3 Rabbit mAb (STJ11103626) at a dilution of 1:200 (40x lens). High pressure antigen retrieval performed with 0.01M Citrate Bufferr (pH 6.0) prior to immunohistochemistry staining.



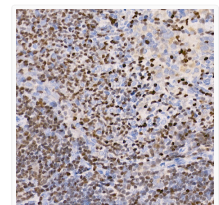
Immunohistochemistry analysis of paraffin-embedded Mouse spleen tissue using IKZF3 Rabbit mAb (STJ11103626) at a dilution of 1:200 (40x lens). High pressure antigen retrieval performed with 0.01M Citrate Bufferr (pH 6.0) prior to immunohistochemistry staining.



Immunohistochemistry analysis of paraffin-embedded Rat spleen tissue using IKZF3 Rabbit mAb (STJ11103626) at a dilution of 1:200 (40x lens). High pressure antigen retrieval performed with 0.01M Citrate Bufferr (pH 6.0) prior to immunohistochemistry staining.



Immunofluorescence analysis of paraffin-embedded rat spleen using IKZF3 Rabbit mAb (STJ11103626) at dilution of 1:100 (40x lens). Secondary antibody: Cy3-conjugated Goat anti-Rabbit IgG (H+L) (STJS001166) at 1:500 dilution. Blue: DAPI for nuclear staining.



Immunoprecipitation analysis of 300 Mu g extracts of Raji cells using 3 Mu g IKZF3 antibody (STJ11103626). Western blot was performed from the immunoprecipitate using IKZF3 antibody (STJ11103626) at a dilution of 1:500.