

## Anti-Sprouty 2 antibody (216-315) [S5MR] (STJ11103625)

### GENERAL INFORMATION

Product Type	Primary antibodies
Applications	WB/IHC-P/ELISA
Host / Source	Rabbit
Reactivity	Human/Rat

### PRODUCT PROPERTIES

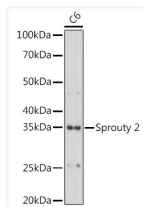
Clonality	Monoclonal
Concentration	Lot specific
Conjugation	Unconjugated
Purification	Affinity purification
Dilution Range	WB:1:500-1:1000 IHC-P:1:50-1:200 ELISA:Recommended starting concentration is 1 µg/mL. Please optimize the concentration based on your specific assay requirements.
Formulation	PBS with 0.02% Sodium Azide, 0.05% BSA, 50% Glycerol, pH 7.3.
Isotype	IgG
Molecular Weight	Protein Mw: 35kDa Observed Mw: 35kDa
Storage Instruction	Store at -20°C for up to 1 year from the date of receipt, and avoid repeat freeze-thaw cycles.

### TARGET INFORMATION

Gene ID	<a href="#">10253</a>
Gene Symbol	<a href="#">SPRY2</a>
UniProt ID	<a href="#">SPY2_HUMAN</a>
Immunogen Region	216-315
Immunogen Sequence	GTCVCCVKGLFYHCSNDDDED NCADNPCSCSQSHCCTRWSA MGVMSLFLPCLWCYLPKGGC LKLQCGCYDRVNRPGCRCKN SNTVCCCKVPTVPPRNFEKPT
Specificity	A synthetic peptide corresponding to a sequence within amino acids 216-315 of human Sprouty 2 (O43597).

### ADDITIONAL INFORMATION

Note **STRICTLY FOR FURTHER SCIENTIFIC RESEARCH USE ONLY (RUO). MUST NOT TO BE USED IN DIAGNOSTIC OR THERAPEUTIC APPLICATIONS.**

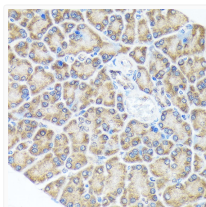


Western blot analysis of lysates from C6 cells, using Sprouty 2 Rabbit mAb (STJ11103625) at 1:1000 dilution.

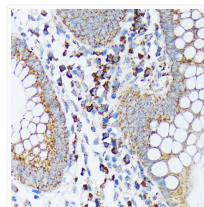
Secondary antibody: HRP-conjugated Goat anti-Rabbit IgG (H+L) (STJS000856) at 1:10000 dilution.

Lysates/proteins: 25 µg per lane.  
Blocking buffer: 3% nonfat dry milk in TBST.

Detection: ECL Basic Kit  
Exposure time: 10s.



Immunohistochemistry analysis of paraffin-embedded Rat pancreas using Sprouty 2 Rabbit mAb (STJ11103625) at dilution of 1:100 (40x lens). Microwave antigen retrieval performed with 0.01M Tris/EDTA Buffer (pH 9.0) prior to immunohistochemistry staining.



Immunohistochemistry analysis of paraffin-embedded Human appendix using Sprouty 2 Rabbit mAb (STJ11103625) at dilution of 1:100 (40x lens). Microwave antigen retrieval performed with 0.01M Tris/EDTA Buffer (pH 9.0) prior to immunohistochemistry staining.