

Anti-TROP-2 antibody (27-270) (STJ11103619)

GENERAL INFORMATION

Product Type	Primary antibodies
Applications	WB/IHC-P/IF/ICC/ELISA
Host / Source	Rabbit
Reactivity	Human/Mouse/Rat

PRODUCT PROPERTIES

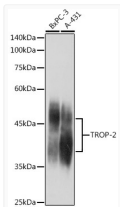
Clonality	Polyclonal
Concentration	Lot specific
Conjugation	Unconjugated
Purification	Affinity purification
Dilution Range	WB:1:500-1:1000 IHC-P:1:50-1:200 IF/ICC:1:50-1:200 ELISA:Recommended starting concentration is 1 µg/mL. Please optimize the concentration based on your specific assay requirements.
Formulation	PBS with 0.02% Sodium Azide, 50% Glycerol, pH 7.3.
Isotype	IgG
Molecular Weight	Protein Mw: 36kDa Observed Mw: 37-50kDa
Storage Instruction	Store at -20°C for up to 1 year from the date of receipt, and avoid repeat freeze-thaw cycles.

TARGET INFORMATION

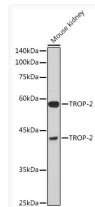
Gene ID	4070
Gene Symbol	TACSTD2
UniProt ID	TACD2_HUMAN
Immunogen Region	27-270
Immunogen Sequence	HTAAQDNCTGPTNKMTVCSP DPGGRCQCRALGSGMAVDC STLTSKCLLLKARMSAPKNA RTLVRPSEHALVDNDGLYDP DCDPEGRFKARQCNTSVCW CVNSVGVRRTDKGLSLRCD ELVRTHHILDLRHRPTAGA FNHSDLDAELRRLFRERYRL HPKFVAAVHYEQPTIQIELR QNTSQKAAGDVDIGDAAYF ERDIKGESLFQGRGGLDLRV RGEPLQVERTLIYYLDEIP
Specificity	Recombinant fusion protein containing a sequence corresponding to amino acids 27-270 of human TROP-2 (NP_002344.2).

ADDITIONAL INFORMATION

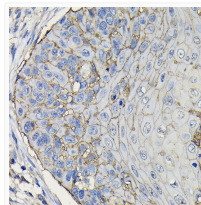
Note **STRICTLY FOR FURTHER SCIENTIFIC RESEARCH USE ONLY (RUO). MUST NOT TO BE USED IN DIAGNOSTIC OR THERAPEUTIC APPLICATIONS.**



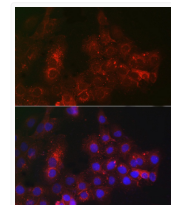
Western blot analysis of various lysates using TROP-2 Rabbit pAb (STJ11103619) at 1:1000 dilution.
 Secondary antibody: HRP-conjugated Goat anti-Rabbit IgG (H+L) (STJS000856) at 1:10000 dilution.
 Lysates/proteins: 25 µg per lane.
 Blocking buffer: 3% nonfat dry milk in TBST.
 Detection: ECL Enhanced Kit
 Exposure time: 1s.



Western blot analysis of lysates from Mouse kidney, using TROP-2 Rabbit pAb (STJ11103619) at 1:1000 dilution.
 Secondary antibody: HRP-conjugated Goat anti-Rabbit IgG (H+L) (STJS000856) at 1:10000 dilution.
 Lysates/proteins: 25 µg per lane.
 Blocking buffer: 3% nonfat dry milk in TBST.
 Detection: ECL Basic Kit
 Exposure time: 10s.



Immunohistochemistry analysis of paraffin-embedded Human esophageal cancer using TROP-2 Rabbit pAb (STJ11103619) at dilution of 1:100 (40x lens). High pressure antigen retrieval performed with 0.01M Citrate Buffer (pH 6.0) prior to immunohistochemistry staining.



Immunofluorescence analysis of A431 cells using TROP-2 Rabbit pAb (STJ11103619) at dilution of 1:100 (40x lens). Secondary antibody: Cy3-conjugated Goat anti-Rabbit IgG (H+L) (STJS001166) at 1:500 dilution. Blue: DAPI for nuclear staining.