

## Anti-Cyclin B2 antibody (1-100) [S8MR] (STJ11103618)

### GENERAL INFORMATION

Product Type	Primary antibodies
Applications	WB/IHC-P/IF/ICC/ELISA
Host / Source	Rabbit
Reactivity	Human/Mouse/Rat

### PRODUCT PROPERTIES

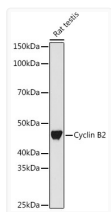
Clonality	Monoclonal
Concentration	Lot specific
Conjugation	Unconjugated
Purification	Affinity purification
Dilution Range	WB:1:500-1:1000 IHC-P:1:50-1:200 IF/CC:1:50-1:200 ELISA:Recommended starting concentration is 1 µg/mL. Please optimize the concentration based on your specific assay requirements.
Formulation	PBS with 0.02% Sodium Azide, 0.05% BSA, 50% Glycerol, pH 7.3.
Isotype	IgG
Molecular Weight	Protein Mw: 45kDa Observed Mw: 45kDa
Storage Instruction	Store at -20°C for up to 1 year from the date of receipt, and avoid repeat freeze-thaw cycles.

### TARGET INFORMATION

Gene ID	<a href="#">9133</a>
Gene Symbol	<a href="#">CCNB2</a>
UniProt ID	<a href="#">CCNB2_HUMAN</a>
Immunogen Region	1-100
Immunogen Sequence	MALLRRPTVSSDLENIDTGV NSKVKSHVTIRRTVLEEIGN RVTTRAAQVAKKAQNTKVPV QPTKTTNVNKQLKPTASVKP VQMEKLAPKGPSPTPEDVSM
Specificity	A synthetic peptide corresponding to a sequence within amino acids 1-100 of human Cyclin B2 (O95067).

### ADDITIONAL INFORMATION

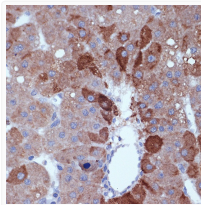
Note STRICTLY FOR FURTHER SCIENTIFIC RESEARCH USE ONLY (RUO). MUST NOT TO BE USED IN DIAGNOSTIC OR THERAPEUTIC APPLICATIONS.



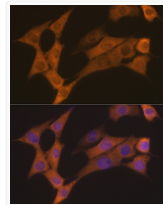
Western blot analysis of lysates from Rat testis, using Cyclin B2 Rabbit mAb (STJ11103618) at 1:1000 dilution.

Secondary antibody: HRP-conjugated Goat anti-Rabbit IgG (H+L) (STJS000856) at 1:10000 dilution.

Lysates/proteins: 25 µg per lane.  
Blocking buffer: 3% nonfat dry milk in TBST.  
Detection: ECL Basic Kit  
Exposure time: 90s.



Immunohistochemistry analysis of paraffin-embedded Human liver cancer using Cyclin B2 Rabbit mAb (STJ11103618) at dilution of 1:100 (40x lens). Microwave antigen retrieval performed with 0.01M Tris/EDTA Buffer (pH 9.0) prior to immunohistochemistry staining.



Confocal imaging of NIH/3T3 cells using Cyclin B2 Rabbit mAb (STJ11103618, dilution 1:100) followed by a further incubation with Cy3 Goat Anti-Rabbit IgG (H+L) (STJS001166, dilution 1:500) (Red). The cells were counterstained with Alpha-Tubulin Mouse mAb (STJ11107556, dilution 1:400) followed by incubation with ABflo® 488-conjugated Goat Anti-Mouse IgG (H+L) antibody (STJS001209, dilution 1:500) (Green). DAPI was used for nuclear staining (Blue). Objective: 100x.