

Anti-CYP26A1 antibody (201-450) [S3MR] (STJ11103603)

GENERAL INFORMATION

Product Type	Primary antibodies
Applications	WB/IHC-P/IF/ICC/ELISA
Host / Source	Rabbit
Reactivity	Human/Mouse/Rat

PRODUCT PROPERTIES

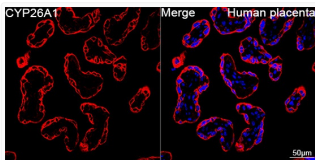
Clonality	Monoclonal
Concentration	Lot specific
Conjugation	Unconjugated
Purification	Affinity purification
Dilution Range	WB:1:500-1:1000 IHC-P:1:50-1:200 IF/CC:1:50-1:200 ELISA:Recommended starting concentration is 1 μ g/mL. Please optimize the concentration based on your specific assay requirements.
Formulation	PBS with 0.02% Sodium Azide, 0.05% BSA, 50% Glycerol, pH 7.3.
Isotype	IgG
Molecular Weight	Protein Mw: 56kDa Observed Mw: 56kDa
Storage Instruction	Store at -20°C for up to 1 year from the date of receipt, and avoid repeat freeze-thaw cycles.

TARGET INFORMATION

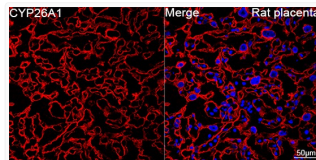
Gene ID	1592
Gene Symbol	CYP26A1
UniProt ID	CP26A_HUMAN
Immunogen Region	201-450
Immunogen Sequence	AGDGDSEQQLVEAFEEMTRN LFSLPIDVPFSGLYRGMKAR NLIHARIEQNIRAKICGLRA SEAGQGCKDALQLLIEHSWE RGERLDMQALKQSSTELLFG GHETTASAATSLITYLGLYP HVLQKVREELKSKGLLCKSN QDNKLDMEILEQLKYIGCVI KETLRNPPVPGGFRVALKT FELNGYQIPKGNVVIYSICD THDVAEIFTNKEEFNDRFM LPHPEDASRFSFIPFGGGGL
Specificity	Recombinant fusion protein containing a sequence corresponding to amino acids 201-450 of human CYP26A1 (O43174).

ADDITIONAL INFORMATION

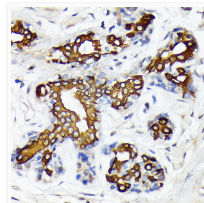
Note STRICTLY FOR FURTHER SCIENTIFIC RESEARCH USE ONLY (RUO). MUST NOT TO BE USED IN DIAGNOSTIC OR THERAPEUTIC APPLICATIONS.



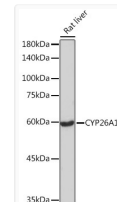
Confocal imaging of paraffin-embedded Human placenta using CYP26A1 Rabbit monoclonal antibody (STJ11103603, dilution 1:100) followed by a further incubation with Cy3 Goat Anti-Rabbit IgG (H+L) (dilution 1:500) (Red). DAPI was used for nuclear staining (Blue). Objective: 40x. Perform high pressure antigen retrieval with 0.01 M citrate buffer (pH 6.0) prior to IF staining.



Confocal imaging of paraffin-embedded Rat placenta using CYP26A1 Rabbit monoclonal antibody (STJ11103603, dilution 1:100) followed by a further incubation with Cy3 Goat Anti-Rabbit IgG (H+L) (dilution 1:500) (Red). DAPI was used for nuclear staining (Blue). Objective: 40x. Perform high pressure antigen retrieval with 0.01 M citrate buffer (pH 6.0) prior to IF staining.



Immunohistochemistry analysis of CYP26A1 in paraffin-embedded human breast using CYP26A1 Rabbit monoclonal antibody (STJ11103603) at dilution of 1:100 (40x lens). Perform microwave antigen retrieval with 10 mM Tris/EDTA buffer pH 9.0 before commencing with immunohistochemistry staining protocol.



Western blot analysis of lysates from Rat liver, using CYP26A1 Rabbit monoclonal antibody (STJ11103603) at 1:1000 dilution. Secondary antibody: HRP Goat Anti-Rabbit IgG (H+L) (STJS000856) at 1:10000 dilution. Lysates/proteins: 25 μ g per lane. Blocking buffer: 3% nonfat dry milk in TBST. Detection: ECL Basic Kit. Exposure time: 180s.