

Anti-CEACAM6 antibody (200-300) [S1MR] (STJ11103601)

GENERAL INFORMATION

Product Type	Primary antibodies
Applications	WB/IF/ICC/ELISA
Host / Source	Rabbit
Reactivity	Human/Mouse/Rat

PRODUCT PROPERTIES

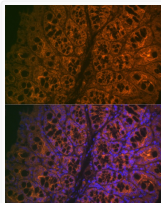
Clonality	Monoclonal
Concentration	Lot specific
Conjugation	Unconjugated
Purification	Affinity purification
Dilution Range	WB:1:500-1:1000 IF/CC:1:50-1:200 ELISA:Recommended starting concentration is 1 μ g/mL. Please optimize the concentration based on your specific assay requirements.
Formulation	PBS with 0.02% Sodium Azide, 0.05% BSA, 50% Glycerol, pH 7.3.
Isotype	IgG
Molecular Weight	Protein Mw: 37kDa Observed Mw: 37kDa
Storage Instruction	Store at -20°C for up to 1 year from the date of receipt, and avoid repeat freeze-thaw cycles.

TARGET INFORMATION

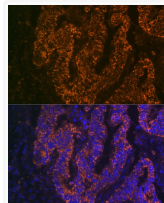
Gene ID	4680
Gene Symbol	CEACAM6
UniProt ID	CEAM6_HUMAN
Immunogen Region	200-300
Immunogen Sequence	LTLLSVKRNDAGSYECEIQN PASANRSDPVTNLNVLYGPDV PTISPSKANYRPGENLNLSC HAASNPPAQYSWFINGTFQQ STQELFIPNITVNNSSGYMC Q
Specificity	A synthetic peptide corresponding to a sequence within amino acids 200-300 of human CEACAM6 (P40199).

ADDITIONAL INFORMATION

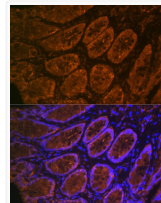
Note STRICTLY FOR FURTHER SCIENTIFIC RESEARCH USE ONLY (RUO). MUST NOT TO BE USED IN DIAGNOSTIC OR THERAPEUTIC APPLICATIONS.



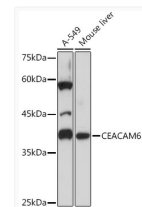
Immunofluorescence analysis of mouse large intestine cells using CEACAM6 Rabbit monoclonal antibody (STJ11103601) at dilution of 1:100 (40x lens). Blue: DAPI for nuclear staining.



Immunofluorescence analysis of human colon carcinoma cells using CEACAM6 Rabbit monoclonal antibody (STJ11103601) at dilution of 1:100 (40x lens). Blue: DAPI for nuclear staining.



Immunofluorescence analysis of rat rectum cells using CEACAM6 Rabbit monoclonal antibody (STJ11103601) at dilution of 1:100 (40x lens). Blue: DAPI for nuclear staining.



Western blot analysis of extracts of various cell lines, using CEACAM6 Rabbit monoclonal antibody (STJ11103601) at 1:1000 dilution. Secondary antibody: HRP Goat Anti-Rabbit IgG (H+L) (STJS000856) at 1:10000 dilution. Lysates/proteins: 25 μ g per lane. Blocking buffer: 3% nonfat dry milk in TBST. Detection: ECL Basic Kit. Exposure time: 1s.