

## Anti-ULK3 antibody (373-472) [S8MR] (STJ11103598)

### GENERAL INFORMATION

Product Type	Primary antibodies
Applications	WB/IF/ICC/ELISA
Host / Source	Rabbit
Reactivity	Human/Mouse/Rat

### PRODUCT PROPERTIES

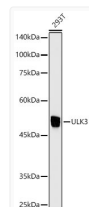
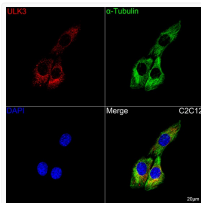
Clonality	Monoclonal
Concentration	Lot specific
Conjugation	Unconjugated
Purification	Affinity purification
Dilution Range	WB:1:500-1:2000 IF/CC:1:50-1:200 ELISA:Recommended starting concentration is 1 µg/mL. Please optimize the concentration based on your specific assay requirements.
Formulation	PBS with 0.02% Sodium Azide, 0.05% BSA, 50% Glycerol, pH 7.3.
Isotype	IgG
Molecular Weight	Protein Mw: 53kDa Observed Mw: 50kDa
Storage Instruction	Store at -20°C for up to 1 year from the date of receipt, and avoid repeat freeze-thaw cycles.

### TARGET INFORMATION

Gene ID	<a href="#">25989</a>
Gene Symbol	<a href="#">ULK3</a>
UniProt ID	<a href="#">ULK3_HUMAN</a>
Immunogen Region	373-472
Immunogen Sequence	KPRLLAALEVASAAMAKEEA AGGEQDALDLYQHSLGELLL LLAAEPPGRRRRELLHTEVQN LMARAEYLKEQVKMRESRWE ADTLDKEGLSESVRSCTLQ
Specificity	A synthetic peptide corresponding to a sequence within amino acids 373-472 of human ULK3 (Q6PHR2).

### ADDITIONAL INFORMATION

Note **STRICTLY FOR FURTHER SCIENTIFIC RESEARCH USE ONLY (RUO). MUST NOT TO BE USED IN DIAGNOSTIC OR THERAPEUTIC APPLICATIONS.**



Confocal imaging of C2C12 cells using ULK3 Rabbit monoclonal antibody (STJ11103598, dilution 1:100) followed by a further incubation with Cy3 Goat Anti-Rabbit IgG (H+L) ( dilution 1:500) (Red). The cells were counterstained with Alpha-Tubulin Mouse monoclonal antibody ( dilution 1:400) followed by incubation with ABflo® 488-conjugated Goat Anti-Mouse IgG (H+L) antibody ( dilution 1:500) (Green). DAPI was used for nuclear staining (Blue). Objective: 100x.

Western blot analysis of lysates from 293T cells using ULK3 Rabbit monoclonal antibody (STJ11103598) at 1:1000 dilution. Secondary antibody: HRP Goat Anti-Rabbit IgG (H+L) (STJS000856) at 1:10000 dilution. Lysates/proteins: 25µg per lane. Blocking buffer: 3% nonfat dry milk in TBST. Detection: ECL Enhanced Kit. Exposure time: 10s.