

Anti-JunD antibody (1-141) [S7MR] (STJ11103587)

GENERAL INFORMATION

Product Type	Primary antibodies
Applications	WB/IHC-P/IP/ELISA
Host / Source	Rabbit
Reactivity	Human/Mouse/Rat

PRODUCT PROPERTIES

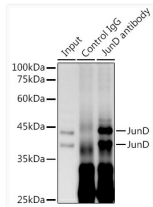
Clonality	Monoclonal
Concentration	Lot specific
Conjugation	Unconjugated
Purification	Affinity purification
Dilution Range	WB:1:500-1:1000 IHC-P:1:50-1:200 IP:0.5 Mu g-4 Mu g antibody for 200 Mu g-400 Mu g extracts of whole cells ELISA:Recommended starting concentration is 1 Mu g/mL. Please optimize the concentration based on your specific assay requirements.
Formulation	PBS with 0.02% Sodium Azide, 0.05% BSA, 50% Glycerol, pH 7.3.
Isotype	IgG
Molecular Weight	Protein Mw: 35kDa Observed Mw: 38kDa/42kDa
Storage Instruction	Store at -20°C for up to 1 year from the date of receipt, and avoid repeat freeze-thaw cycles.

TARGET INFORMATION

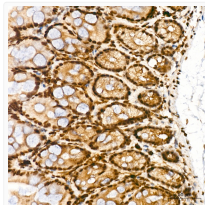
Gene ID	3727
Gene Symbol	JUND
UniProt ID	JUND_HUMAN
Immunogen Region	1-141
Immunogen Sequence	METPFYGDALSGLGGGASG SGGSFASPGRLFPAPPTAA AGSMMKKDALTLSEQVAA ALKPAAAPPPTPLRADGAPS AAPDGLLSPDLGLLKLAS PELERLIQSNGLVTTTPTS SQFLYPKVAASEEQEFAEGF V
Specificity	Recombinant fusion protein containing a sequence corresponding to amino acids 1-141 of human JunD (P17535).

ADDITIONAL INFORMATION

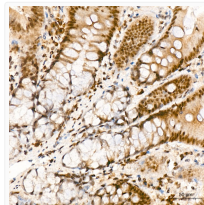
Note STRICTLY FOR FURTHER SCIENTIFIC RESEARCH USE ONLY (RUO). MUST NOT TO BE USED IN DIAGNOSTIC OR THERAPEUTIC APPLICATIONS.



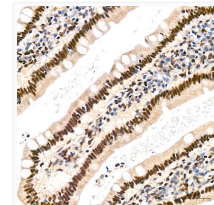
Immunoprecipitation analysis of 300 Mu g extracts of HeLa cells using 3 Mu g JunD antibody (STJ11103587). Western blot was performed from the immunoprecipitate using JunD antibody (STJ11103587) at a dilution of 1:1000.



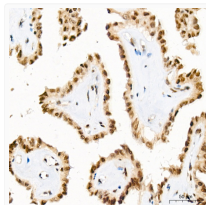
Immunohistochemistry analysis of JunD in paraffin-embedded mouse colon tissue using JunD Rabbit monoclonal antibody (STJ11103587) at a dilution of 1:200 (40x lens). High pressure antigen retrieval was performed with 0.01 M Tris-EDTA buffer (pH 9.0) prior to immunohistochemistry staining.



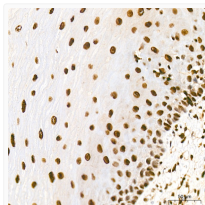
Immunohistochemistry analysis of JunD in paraffin-embedded rat colon tissue using JunD Rabbit monoclonal antibody (STJ11103587) at a dilution of 1:200 (40x lens). High pressure antigen retrieval was performed with 0.01 M Tris-EDTA buffer (pH 9.0) prior to immunohistochemistry staining.



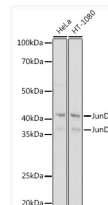
Immunohistochemistry analysis of JunD in paraffin-embedded human small intestine tissue using JunD Rabbit monoclonal antibody (STJ11103587) at a dilution of 1:200 (40x lens). High pressure antigen retrieval was performed with 0.01 M Tris-EDTA buffer (pH 9.0) prior to immunohistochemistry staining.



Immunohistochemistry analysis of JunD in paraffin-embedded human thyroid tissue using JunD Rabbit monoclonal antibody (STJ11103587) at a dilution of 1:200 (40x lens). High pressure antigen retrieval was performed with 0.01 M Tris-EDTA buffer (pH 9.0) prior to immunohistochemistry staining.



Immunohistochemistry analysis of JunD in paraffin-embedded human esophagus tissue using JunD Rabbit monoclonal antibody (STJ11103587) at a dilution of 1:200 (40x lens). High pressure antigen retrieval was performed with 0.01 M Tris-EDTA buffer (pH 9.0) prior to immunohistochemistry staining.



Western blot analysis of various lysates using JunD Rabbit monoclonal antibody (STJ11103587) at 1:1000 dilution. Secondary antibody: HRP Goat Anti-Rabbit IgG (H+L) (STJS000856) at 1:10000 dilution. Lysates/proteins: 25 Mu g per lane. Blocking buffer: 3% nonfat dry milk in TBST. Detection: ECL Basic Kit. Exposure time: 10s.