

Anti-PMEL antibody (320-430) (STJ11103586)

GENERAL INFORMATION

Product Type	Primary antibodies
Applications	WB/IF/ICC/ELISA
Host / Source	Rabbit
Reactivity	Human/Mouse/Rat

PRODUCT PROPERTIES

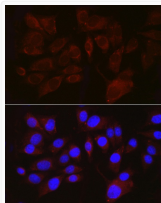
Clonality	Polyclonal
Concentration	Lot specific
Conjugation	Unconjugated
Purification	Affinity purification
Dilution Range	WB:1:500-1:2000 IF/CC:1:50-1:200 ELISA:Recommended starting concentration is 1 μ g/mL. Please optimize the concentration based on your specific assay requirements.
Formulation	PBS with 0.05% Proclin300, 50% Glycerol, pH 7.3.
Isotype	IgG
Molecular Weight	Protein Mw: 70kDa Observed Mw: 80kDa/105kDa
Storage Instruction	Store at -20°C for up to 1 year from the date of receipt, and avoid repeat freeze-thaw cycles.

TARGET INFORMATION

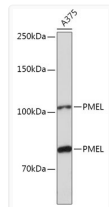
Gene ID	6490
Gene Symbol	PMEL
UniProt ID	PMEL_HUMAN
Immunogen Region	320-430
Immunogen Sequence	PNTTAGQVPTTEVVGTTGPGQ APTAEPSTGTTSVQVPTTEVI STAPVQMPTAESTGMTPEKV PVSEVMGTTLAEMSTPEATG MTPAEVSIVVLSGTTAAQVT TTEWVETTARE
Specificity	Recombinant fusion protein containing a sequence corresponding to amino acids 320-430 of human PMEL (NP_008859.1).

ADDITIONAL INFORMATION

Note STRICTLY FOR FURTHER SCIENTIFIC RESEARCH USE ONLY (RUO). MUST NOT TO BE USED IN DIAGNOSTIC OR THERAPEUTIC APPLICATIONS.



Immunofluorescence analysis of A375 cells using PMEL Rabbit polyclonal antibody (STJ11103586) at dilution of 1:100 (40x lens). Secondary antibody: Cy3 Goat Anti-Rabbit IgG (H+L) at 1:500 dilution. Blue: DAPI for nuclear staining.



Western blot analysis of lysates from A375 cells, using PMEL Rabbit polyclonal antibody (STJ11103586) at 1:1000 dilution. Secondary antibody: HRP Goat Anti-Rabbit IgG (H+L) (STJS000856) at 1:10000 dilution. Lysates/proteins: 25 μ g per lane. Blocking buffer: 3% nonfat dry milk in TBST. Detection: ECL Basic Kit. Exposure time: 3min.