

Anti-Cytokeratin 10 antibody (485-584) [S4MR] (STJ11103574)

GENERAL INFORMATION

Product Type	Primary antibodies
Applications	WB/IF/ICC/ELISA
Host / Source	Rabbit
Reactivity	Human/Mouse/Rat

PRODUCT PROPERTIES

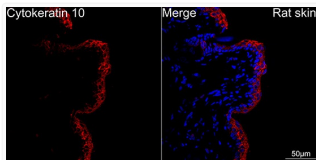
Clonality	Monoclonal
Concentration	Lot specific
Conjugation	Unconjugated
Purification	Affinity purification
Dilution Range	WB:1:100-1:500 IF/CC:1:200-1:2000 ELISA:Recommended starting concentration is 1 Mu g/mL. Please optimize the concentration based on your specific assay requirements.
Formulation	PBS with 0.02% Sodium Azide, 0.05% BSA, 50% Glycerol, pH 7.3.
Isotype	IgG
Molecular Weight	Protein Mw: 59kDa Observed Mw: 60kDa
Storage Instruction	Store at -20°C for up to 1 year from the date of receipt, and avoid repeat freeze-thaw cycles.

TARGET INFORMATION

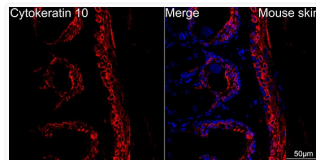
Gene ID	3858
Gene Symbol	KRT10
UniProt ID	K1C10_HUMAN
Immunogen Region	485-584
Immunogen Sequence	GGHGGGHGGSSGGYGGSS GGGSSGGYGGSSSGHGG SSSGGYGGSSGGGGYGG GSSGGSSGGYGGSSSG GHKSSSSGSGVGESSKGPY
Specificity	A synthetic peptide corresponding to a sequence within amino acids 485-584 of human Cytokeratin 10 (P13645).

ADDITIONAL INFORMATION

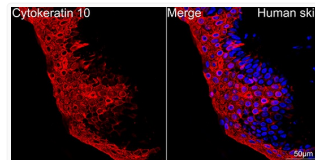
Note STRICTLY FOR FURTHER SCIENTIFIC RESEARCH USE ONLY (RUO). MUST NOT TO BE USED IN DIAGNOSTIC OR THERAPEUTIC APPLICATIONS.



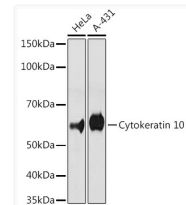
Confocal imaging of paraffin-embedded Rat skin using Cytokeratin 10 Rabbit monoclonal antibody (STJ11103574, dilution 1:200) followed by a further incubation with Cy3 Goat Anti-Rabbit IgG (H+L) (dilution 1:500) (Red). DAPI was used for nuclear staining (Blue). Objective: 40x. Perform high pressure antigen retrieval with 0. 01M citrate buffer (pH 6. 0) prior to IF staining.



Confocal imaging of paraffin-embedded Mouse skin using Cytokeratin 10 Rabbit monoclonal antibody (STJ11103574, dilution 1:200) followed by a further incubation with Cy3 Goat Anti-Rabbit IgG (H+L) (dilution 1:500) (Red). DAPI was used for nuclear staining (Blue). Objective: 40x. Perform high pressure antigen retrieval with 0. 01M citrate buffer (pH 6. 0) prior to IF staining.



Confocal imaging of paraffin-embedded Human skin using Cytokeratin 10 Rabbit monoclonal antibody (STJ11103574, dilution 1:200) followed by a further incubation with Cy3 Goat Anti-Rabbit IgG (H+L) (dilution 1:500) (Red). DAPI was used for nuclear staining (Blue). Objective: 40x. Perform high pressure antigen retrieval with 0. 01M citrate buffer (pH 6. 0) prior to IF staining.



Western blot analysis of various lysates using Cytokeratin 10 Rabbit monoclonal antibody (STJ11103574) at 1:500 dilution. Secondary antibody: HRP Goat Anti-Rabbit IgG (H+L) (STJS000856) at 1:10000 dilution. Lysates/proteins: 25 Mu g per lane. Blocking buffer: 3% nonfat dry milk in TBST. Detection: ECL Basic Kit. Exposure time: 180s.