

Anti-PODXL antibody (300-479) [S8MR] (STJ11103568)

GENERAL INFORMATION

Product Type	Primary antibodies
Applications	WB/IHC-P/ELISA
Host / Source	Rabbit
Reactivity	Human

PRODUCT PROPERTIES

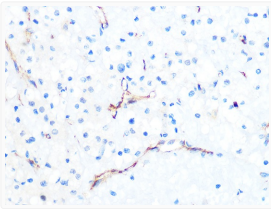
Clonality	Monoclonal
Concentration	Lot specific
Conjugation	Unconjugated
Purification	Affinity purification
Dilution Range	WB:1:500-1:1000 IHC-P:1:50-1:200 ELISA:Recommended starting concentration is 1 µg/mL. Please optimize the concentration based on your specific assay requirements.
Formulation	PBS with 0.02% Sodium Azide, 0.05% BSA, 50% Glycerol, pH 7.3.
Isotype	IgG
Molecular Weight	Protein Mw: 59kDa Observed Mw: 200-400kDa
Storage Instruction	Store at -20°C for up to 1 year from the date of receipt, and avoid repeat freeze-thaw cycles.

TARGET INFORMATION

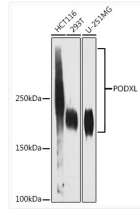
Gene ID	5420
Gene Symbol	PODXL
UniProt ID	PODXL_HUMAN
Immunogen Region	300-479
Immunogen Sequence	SPATALRTPPLPETMSSSPT AASTTHRYPKTPSPTVAHES NWAKCEDLETQTQSEKQLVL NLGTNTLCAGGASDEKLISL ICRAVKATFNPAQDKCGIRL ASVPGSQTVVYKEITHTKL PAKDVIYERLKDKEAG VSDMKLGDQGPPEEAEDRFS MPLIITVCMASFLLLVAAL
Specificity	Recombinant fusion protein containing a sequence corresponding to amino acids 300-479 of human PODXL (O00592).

ADDITIONAL INFORMATION

Note **STRICTLY FOR FURTHER SCIENTIFIC RESEARCH USE ONLY (RUO). MUST NOT TO BE USED IN DIAGNOSTIC OR THERAPEUTIC APPLICATIONS.**



Immunohistochemistry analysis of paraffin-embedded human kidney cancer using PODXL Rabbit monoclonal antibody (STJ11103568) at dilution of 1:100 (40x lens). Perform microwave antigen retrieval with 10 mM PBS buffer pH 7.2 before commencing with immunohistochemistry staining protocol.



Western blot analysis of extracts of various cell lines, using PODXL antibody (STJ11103568) at 1:1000 dilution. Secondary antibody: HRP Goat Anti-Rabbit IgG (H+L) (STJS000856) at 1:10000 dilution. Lysates/proteins: 25 µg per lane. Blocking buffer: 3% nonfat dry milk in TBST. Detection: ECL Enhanced Kit. Exposure time: 180s.