

Anti-PSA/KLK3 antibody (162-261) [S2MR] (STJ11103562)

GENERAL INFORMATION

Product Type	Primary antibodies
Applications	WB/ELISA
Host / Source	Rabbit
Reactivity	Human

PRODUCT PROPERTIES

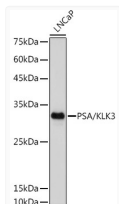
Clonality	Monoclonal
Concentration	Lot specific
Conjugation	Unconjugated
Purification	Affinity purification
Dilution Range	WB:1:500-1:1000 ELISA:Recommended starting concentration is 1 µg/mL. Please optimize the concentration based on your specific assay requirements.
Formulation	PBS with 0.02% Sodium Azide, 0.05% BSA, 50% Glycerol, pH 7.3.
Isotype	IgG
Molecular Weight	Protein Mw: 29kDa Observed Mw: 30kDa
Storage Instruction	Store at -20°C for up to 1 year from the date of receipt, and avoid repeat freeze-thaw cycles.

TARGET INFORMATION

Gene ID	354
Gene Symbol	KLK3
UniProt ID	KLK3_HUMAN
Immunogen Region	162-261
Immunogen Sequence	PEEFLTPKKLQCVDLHVISN DVCAQVHPQKVTKFMLCAGR WTGGKSTCSGDSGGPLVCNG VLQGITSWGSEPCALPERPS LYTKVVHYRKWIKDTIVANP
Specificity	A synthetic peptide corresponding to a sequence within amino acids 162-261 of human PSA/KLK3 (P07288).

ADDITIONAL INFORMATION

Note STRICTLY FOR FURTHER SCIENTIFIC RESEARCH USE ONLY (RUO). MUST NOT TO BE USED IN DIAGNOSTIC OR THERAPEUTIC APPLICATIONS.



Western blot analysis of extracts of LNCaP cells, using PSA/KLK3 antibody (STJ11103562) at 1:1000 dilution. Secondary antibody: HRP Goat Anti-Rabbit IgG (H+L) (STJS000856) at 1:10000 dilution. Lysates/proteins: 25 µg per lane. Blocking buffer: 3% nonfat dry milk in TBST. Detection: ECL Basic Kit. Exposure time: 10s.