

Anti-Prostatic Acid Phosphatase antibody (1-100) [S5MR] (STJ11103555)

GENERAL INFORMATION

Product Type	Primary antibodies
Applications	WB/ELISA
Host / Source	Rabbit
Reactivity	Human/Mouse/Rat

PRODUCT PROPERTIES

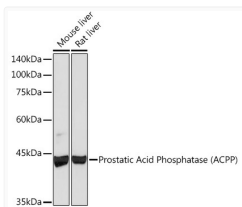
Clonality	Monoclonal
Concentration	Lot specific
Conjugation	Unconjugated
Purification	Affinity purification
Dilution Range	WB:1:500-1:1000 ELISA:Recommended starting concentration is 1 Mu g/mL. Please optimize the concentration based on your specific assay requirements.
Formulation	PBS with 0.02% Sodium Azide, 0.05% BSA, 50% Glycerol, pH 7.3.
Isotype	IgG
Molecular Weight	Protein Mw: 45kDa Observed Mw: 45kDa
Storage Instruction	Store at -20°C for up to 1 year from the date of receipt, and avoid repeat freeze-thaw cycles.

TARGET INFORMATION

Gene ID	55
Gene Symbol	ACP3
UniProt ID	PPAP_HUMAN
Immunogen Region	1-100
Immunogen Sequence	MRAAPLLARAASLSLGLFL LFFWLDRSVLAKELKFVTL VFRHGDRSPIDTFPTDPIKE SSWPQGFGLTQLGMEQHYE LGEYIRKRYRKFLNESYKHE
Specificity	A synthetic peptide corresponding to a sequence within amino acids 1-100 of human Prostatic Acid Phosphatase (PAP/ACPP) (P15309).

ADDITIONAL INFORMATION

Note STRICTLY FOR FURTHER SCIENTIFIC RESEARCH USE ONLY (RUO). MUST NOT TO BE USED IN DIAGNOSTIC OR THERAPEUTIC APPLICATIONS.



Western blot analysis of extracts of various cell lines, using Prostatic Acid Phosphatase (ACPP) (PAP/ACPP) Rabbit monoclonal antibody (STJ11103555) at 1:1000 dilution. Secondary antibody: HRP Goat Anti-Rabbit IgG (H+L) (STJS000856) at 1:10000 dilution. Lysates/proteins: 25 Mu g per lane. Blocking buffer: 3% nonfat dry milk in TBST. Detection: ECL Basic Kit. Exposure time: 180s.