

Anti-CD3G antibody (83-182) [S1MR] (STJ11103551)

GENERAL INFORMATION

Product Type	Primary antibodies
Applications	WB/IHC-P/IF/ICC/FC/ELISA
Host / Source	Rabbit
Reactivity	Human/Mouse/Rat

PRODUCT PROPERTIES

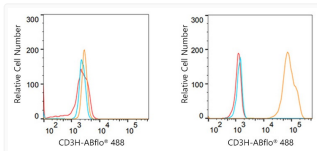
Clonality	Monoclonal
Concentration	Lot specific
Conjugation	Unconjugated
Purification	Affinity purification
Dilution Range	WB:1:500-1:1000 IHC-P:1:50-1:200 IF/CC:1:50-1:200 FC:1:50-1:200 ELISA:Recommended starting concentration is 1 µg/mL. Please optimize the concentration based on your specific assay requirements.
Formulation	PBS with 0.02% Sodium Azide, 0.05% BSA, 50% Glycerol, pH 7.3.
Isotype	IgG
Molecular Weight	Protein Mw: 20kDa Observed Mw: 24kDa
Storage Instruction	Store at -20°C for up to 1 year from the date of receipt, and avoid repeat freeze-thaw cycles.

TARGET INFORMATION

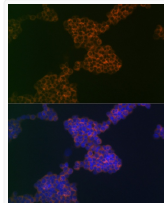
Gene ID	917
Gene Symbol	CD3G
UniProt ID	CD3G_HUMAN
Immunogen Region	83-182
Immunogen Sequence	GMYQCKGSQNKSKPLQVYYR MCQNCIELNAATISGFLFAE IVSIFVLAVGVYFIAGQDGV RQSRASDKQTLLPNDQLYQP LKDREDDQYSHLQGNQLRRN
Specificity	A synthetic peptide corresponding to a sequence within amino acids 83-182 of human CD3G (P09693).

ADDITIONAL INFORMATION

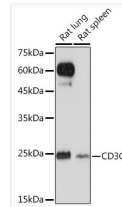
Note **STRICTLY FOR FURTHER SCIENTIFIC RESEARCH USE ONLY (RUO). MUST NOT TO BE USED IN DIAGNOSTIC OR THERAPEUTIC APPLICATIONS.**



Flow cytometry: 1X10⁶ Raji cells (negative control, left) and Jurkat cells (right) were intracellularly-stained with CD3G Rabbit monoclonal antibody (STJ11103551, 2.5 µg/mL orange line) or ABflo® 488 Rabbit IgG isotype control (2.5 µg/mL, blue line). Non-fluorescently stained cells were used as blank control (red line).



Immunofluorescence analysis of Jurkat cells using CD3G Rabbit monoclonal antibody (STJ11103551) at dilution of 1:100 (40x lens). Blue: DAPI for nuclear staining.



Western blot analysis of extracts of various cell lines, using CD3G Rabbit monoclonal antibody (STJ11103551) at 1:1000 dilution. Secondary antibody: HRP Goat Anti-Rabbit IgG (H+L) (STJS000856) at 1:10000 dilution. Lysates/proteins: 25 µg per lane. Blocking buffer: 3% nonfat dry milk in TBST. Detection: ECL Basic Kit. Exposure time: 120s.