

Anti-CENPC antibody (380-520) [S3MR] (STJ11103543)

GENERAL INFORMATION

Product Type	Primary antibodies
Applications	WB/IF/ICC/ELISA
Host / Source	Rabbit
Reactivity	Human/Rat

PRODUCT PROPERTIES

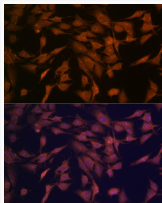
Clonality	Monoclonal
Concentration	Lot specific
Conjugation	Unconjugated
Purification	Affinity purification
Dilution Range	WB:1:500-1:2000 IF/CC:1:50-1:200 ELISA:Recommended starting concentration is 1 μ g/mL. Please optimize the concentration based on your specific assay requirements.
Formulation	PBS with 0.02% Sodium Azide, 0.05% BSA, 50% Glycerol, pH 7.3.
Isotype	IgG
Molecular Weight	Protein Mw: 107kDa Observed Mw: 107kDa
Storage Instruction	Store at -20°C for up to 1 year from the date of receipt, and avoid repeat freeze-thaw cycles.

TARGET INFORMATION

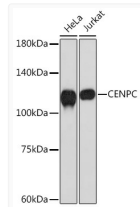
Gene ID	1060
Gene Symbol	CENPC
UniProt ID	CENPC_HUMAN
Immunogen Region	380-520
Immunogen Sequence	VLDTSYALIGETVNNYRSTK YEMYSKNAEKPSRSKRTIKQ KQRRKFMKPAEEQLDVGQS KDNIHTSHITQDEFQRNSD RNMEEHHEEMGNDVCVSKKQMP PVGSKKSSTRKDKKEESKKKR FSSESNNKLVPEEVTSTVTK S
Specificity	Recombinant fusion protein containing a sequence corresponding to amino acids 380-520 of human CENPC (Q03188).

ADDITIONAL INFORMATION

Note **STRICTLY FOR FURTHER SCIENTIFIC RESEARCH USE ONLY (RUO). MUST NOT TO BE USED IN DIAGNOSTIC OR THERAPEUTIC APPLICATIONS.**



Immunofluorescence analysis of C6 cells using CENPC Rabbit monoclonal antibody (STJ11103543) at dilution of 1:100 (40x lens). Blue: DAPI for nuclear staining.



Western blot analysis of extracts of various cell lines, using CENPC Rabbit monoclonal antibody (STJ11103543) at 1:1000 dilution. Secondary antibody: HRP Goat Anti-Rabbit IgG (H+L) (STJS000856) at 1:10000 dilution. Lysates/proteins: 25 μ g per lane. Blocking buffer: 3% nonfat dry milk in TBST. Detection: ECL Basic Kit. Exposure time: 30s.