

Anti-Kaiso/ZBTB33 antibody (573-672) [S4MR] (STJ11103534)

GENERAL INFORMATION

Product Type	Primary antibodies
Applications	WB/IF/ICC/IP/ELISA
Host / Source	Rabbit
Reactivity	Human/Rat

PRODUCT PROPERTIES

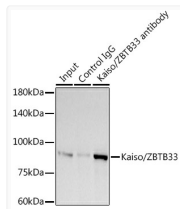
Clonality	Monoclonal
Concentration	Lot specific
Conjugation	Unconjugated
Purification	Affinity purification
Dilution Range	WB:1:500-1:1000 IF/CC:1:50-1:200 IP:0.5 Mu g-4 Mu g antibody for 200 Mu g-400 Mu g extracts of whole cells ELISA:Recommended starting concentration is 1 Mu g/mL. Please optimize the concentration based on your specific assay requirements
Formulation	PBS with 0.02% Sodium Azide, 0.05% BSA, 50% Glycerol, pH 7.3.
Isotype	IgG
Molecular Weight	Protein Mw: 74KDa Observed Mw: 80kDa
Storage Instruction	Store at -20°C for up to 1 year from the date of receipt, and avoid repeat freeze-thaw cycles.

TARGET INFORMATION

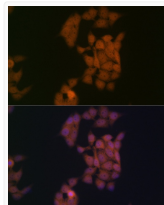
Gene ID	10009
Gene Symbol	ZBTB33
UniProt ID	KAISO_HUMAN
Immunogen Region	573-672
Immunogen Sequence	HSQDPSPGDSKLYRLHPCRSL QIRQYAYLSDRSSTIPAMKD DGIGYKVDTGKEPPVGTTS TQNKPMTWEDIFIQQENDSI FKQNVTDGSTEFEFIIPESY
Specificity	A synthetic peptide corresponding to a sequence within amino acids 573-672 of human Kaiso/ZBTB33 (Q86T24).

ADDITIONAL INFORMATION

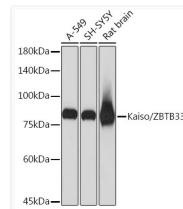
Note **STRICTLY FOR FURTHER SCIENTIFIC RESEARCH USE ONLY (RUO). MUST NOT TO BE USED IN DIAGNOSTIC OR THERAPEUTIC APPLICATIONS.**



Immunoprecipitation analysis of 300 Mu g extracts of A-549 cells using 3 Mu g Kaiso/ZBTB33 antibody (STJ11103534). Western blot was performed from the immunoprecipitate using Kaiso/ZBTB33 antibody (STJ11103534) at a dilution of 1:1000.



Immunofluorescence analysis of HeLa cells using Kaiso/ZBTB33 Rabbit monoclonal antibody (STJ11103534) at dilution of 1:100 (40x lens). Secondary antibody: Cy3 Goat Anti-Rabbit IgG (H+L) at 1:500 dilution. Blue: DAPI for nuclear staining.



Western blot analysis of various lysates using Kaiso/ZBTB33 Rabbit monoclonal antibody (STJ11103534) at 1:1000 dilution. Secondary antibody: HRP Goat Anti-Rabbit IgG (H+L) (STJS000856) at 1:10000 dilution. Lysates/proteins: 25 Mu g per lane. Blocking buffer: 3% nonfat dry milk in TBST. Detection: ECL Basic Kit. Exposure time: 1s.