

Anti-SLC3A2/CD98hc antibody (350-450) [S9MR] (STJ11103529)

GENERAL INFORMATION

Product Type	Primary antibodies
Applications	WB/ELISA
Host / Source	Rabbit
Reactivity	Human

PRODUCT PROPERTIES

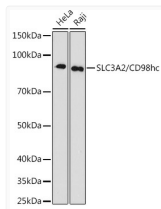
Clonality	Monoclonal
Concentration	Lot specific
Conjugation	Unconjugated
Purification	Affinity purification
Dilution Range	WB:1:500-1:1000
Formulation	PBS with 0.02% Sodium Azide, 0.05% BSA, 50% Glycerol, pH 7.3.
Isotype	IgG
Molecular Weight	Protein Mw: 58kDa Observed Mw: 90kDa
Storage Instruction	Store at -20°C for up to 1 year from the date of receipt, and avoid repeat freeze-thaw cycles.

TARGET INFORMATION

Gene ID	6520
Gene Symbol	SLC3A2
UniProt ID	4F2_HUMAN
Immunogen Region	350-450
Immunogen Sequence	IENLKDASSFLAEWQNITKG FSEDRLLIAGTNSSDLQQL SLLESNKDLLLTSSYLSDSG STGEHTKSLVTQYLNATGNR WCSWLSLQARLLTSFLPAQL L
Specificity	A synthetic peptide corresponding to a sequence within amino acids 350-450 of human SLC3A2/CD98hc (P08195).

ADDITIONAL INFORMATION

Note STRICTLY FOR FURTHER SCIENTIFIC RESEARCH USE ONLY (RUO). MUST NOT TO BE USED IN DIAGNOSTIC OR THERAPEUTIC APPLICATIONS.



Western blot analysis of extracts of various cell lines, using antibody (STJ11103529) at 1:1000 dilution. Secondary antibody: HRP Goat Anti-Rabbit IgG (H+L) (STJS000856) at 1:10000 dilution. Lysates/proteins: 25 μ g per lane. Blocking buffer: 3% nonfat dry milk in TBST. Detection: ECL Basic Kit. Exposure time: 180s.