

Anti-Dynein intermediate chain 1 antibody (1-200) [S8MR] (STJ11103528)

GENERAL INFORMATION

Product Type	Primary antibodies
Applications	WB/ELISA
Host / Source	Rabbit
Reactivity	Mouse/Rat

PRODUCT PROPERTIES

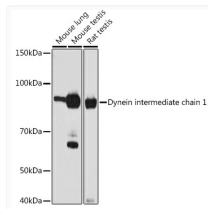
Clonality	Monoclonal
Concentration	Lot specific
Conjugation	Unconjugated
Purification	Affinity purification
Dilution Range	WB:1:500-1:1000 ELISA:Recommended starting concentration is 1 µg/mL. Please optimize the concentration based on your specific assay requirements.
Formulation	PBS with 0.02% Sodium Azide, 0.05% BSA, 50% Glycerol, pH 7.3.
Isotype	IgG
Molecular Weight	Protein Mw: 79kDa Observed Mw: 79kDa
Storage Instruction	Store at -20°C for up to 1 year from the date of receipt, and avoid repeat freeze-thaw cycles.

TARGET INFORMATION

Gene ID	27019
Gene Symbol	DNAI1
UniProt ID	DNAI1_HUMAN
Immunogen Region	1-200
Immunogen Sequence	MIPASAKAPHKQPHKQISISI GRGTRKRDEDSGTEVGEGTD EWAQSKATVRRPPDQLELTDA ELKEEFTRILTANNPHAPQN IVRYSFKEGTYKPIGFVNQL AVHYTQVGNLIPKDSDEGRR QHYRDELVAGSQESVKVISE TGNLEEDDEEPEKLETEPGSQ TDVPAAGAAEKVTEEELMTP KQPKERKLTNQFNFSERASQ
Specificity	Recombinant fusion protein containing a sequence corresponding to amino acids 1-200 of human Dynein intermediate chain 1 (Q9UI46).

ADDITIONAL INFORMATION

Note **STRICTLY FOR FURTHER SCIENTIFIC RESEARCH USE ONLY (RUO). MUST NOT TO BE USED IN DIAGNOSTIC OR THERAPEUTIC APPLICATIONS.**



Western blot analysis of extracts of various cell lines, using Dynein intermediate chain 1 antibody (STJ11103528) at 1:1000 dilution. Secondary antibody: HRP Goat Anti-Rabbit IgG (H+L) (STJS000856) at 1:10000 dilution. Lysates/proteins: 25 µg per lane. Blocking buffer: 3% nonfat dry milk in TBST. Detection: ECL Basic Kit. Exposure time: 60s.