

Anti-Cenexin1/ODF2 antibody (730-829) [S7MR] (STJ11103527)

GENERAL INFORMATION

Product Type	Primary antibodies
Applications	WB/ELISA
Host / Source	Rabbit
Reactivity	Human

PRODUCT PROPERTIES

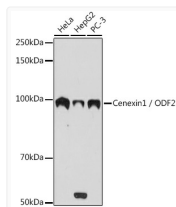
Clonality	Monoclonal
Concentration	Lot specific
Conjugation	Unconjugated
Purification	Affinity purification
Dilution Range	WB:1:500-1:1000 ELISA:Recommended starting concentration is 1 Mu g/mL. Please optimize the concentration based on your specific assay requirements.
Formulation	PBS with 0.02% Sodium Azide, 0.05% BSA, 50% Glycerol, pH 7.3.
Isotype	IgG
Molecular Weight	Protein Mw: 95kDa Observed Mw: 97kDa
Storage Instruction	Store at -20°C for up to 1 year from the date of receipt, and avoid repeat freeze-thaw cycles.

TARGET INFORMATION

Gene ID	4957
Gene Symbol	ODF2
UniProt ID	ODFP2_HUMAN
Immunogen Region	730-829
Immunogen Sequence	KEHALSKERAAQNKILDLET QLSRTKTELSQLRRSRDDAD RRYQSRLQDLKDRLEQSEST NRSMQNYVQFLKSSYANVFG DGPYSTFLTSSPIRSRPPA
Specificity	A synthetic peptide corresponding to a sequence within amino acids 730-829 of human Cenexin1/ODF2 (Q5BJF6).

ADDITIONAL INFORMATION

Note STRICTLY FOR FURTHER SCIENTIFIC RESEARCH USE ONLY (RUO). MUST NOT TO BE USED IN DIAGNOSTIC OR THERAPEUTIC APPLICATIONS.



Western blot analysis of extracts of various cell lines, using Cenexin1/ ODF2 antibody (STJ11103527) at 1:1000 dilution. Secondary antibody: HRP Goat Anti-Rabbit IgG (H+L) (STJS000856) at 1:10000 dilution. Lysates/proteins: 25 Mu g per lane. Blocking buffer: 3% nonfat dry milk in TBST. Detection: ECL Basic Kit. Exposure time: 10s.