

Anti-Complement C4A antibody (940-1237) [S2MR] (STJ11103522)

GENERAL INFORMATION

Product Type	Primary antibodies
Applications	WB/IF/ICC/ELISA
Host / Source	Rabbit
Reactivity	Human

PRODUCT PROPERTIES

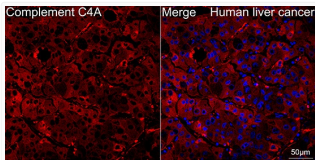
Clonality	Monoclonal
Concentration	Lot specific
Conjugation	Unconjugated
Purification	Affinity purification
Dilution Range	WB:1:500-1:1000 IF/CC:1:50-1:200 ELISA:Recommended starting concentration is 1 Mu g/mL. Please optimize the concentration based on your specific assay requirements.
Formulation	PBS with 0.02% Sodium Azide, 0.05% BSA, 50% Glycerol, pH 7.3.
Isotype	IgG
Molecular Weight	Protein Mw: 193kDa Observed Mw: 200kDa
Storage Instruction	Store at -20°C for up to 1 year from the date of receipt, and avoid repeat freeze-thaw cycles.

TARGET INFORMATION

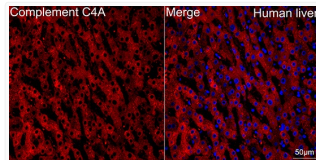
Gene ID	720721
Gene Symbol	C4A
UniProt ID	CO4A_HUMAN
Immunogen Region	940-1237
Immunogen Sequence	HREELVYELNPLDHRGRTLIPGNSDPNMIPDGDNFNSYVRVTASDPLDTLGSEGALSPGG VASLLRLPRGCGEQTMIIYLAPTLAASRYLDKTEQWSTLPPETKDHAVDLIQGYMRIQQF RKADGSYAAWLSRDSSTWLTAFVLKVLSLAQEQVGGSPK LQETSNWLLSQQQADGGSFQD PCPVLD RSMQGGGLVGNDETVALTAFVTIALHHGLAVFQDEGAEPLKQRVEASISKANSF
Specificity	Recombinant fusion protein containing a sequence corresponding to amino acids 940-1237 of human Complement C4A (P0C0L4).

ADDITIONAL INFORMATION

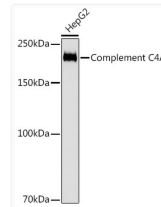
Note STRICTLY FOR FURTHER SCIENTIFIC RESEARCH USE ONLY (RUO). MUST NOT TO BE USED IN DIAGNOSTIC OR THERAPEUTIC APPLICATIONS.



Confocal imaging of paraffin-embedded Human liver cancer tissue using Complement C4A Rabbit monoclonal antibody (STJ11103522, dilution 1:100) followed by a further incubation with Cy3 Goat Anti-Rabbit IgG (H+L) (dilution 1:500) (Red). DAPI was used for nuclear staining (Blue). Objective: 40x. Perform high pressure antigen retrieval with 0.01 M citrate buffer (pH 6.0) prior to IF staining.



Confocal imaging of paraffin-embedded Human liver tissue using Complement C4A Rabbit monoclonal antibody (STJ11103522, dilution 1:100) followed by a further incubation with Cy3 Goat Anti-Rabbit IgG (H+L) (dilution 1:500) (Red). DAPI was used for nuclear staining (Blue). Objective: 40x. Perform high pressure antigen retrieval with 0.01 M citrate buffer (pH 6.0) prior to IF staining.



Western blot analysis of lysates from HepG2 cells, using Complement C4A Rabbit monoclonal antibody (STJ11103522) at 1:1000 dilution. Secondary antibody: HRP Goat Anti-Rabbit IgG (H+L) (STJS000856) at 1:10000 dilution. Lysates/proteins: 25 Mu g per lane. Blocking buffer: 3% nonfat dry milk in TBST. Detection: ECL Basic Kit. Exposure time: 3s.